



[Go to Product page](#)

Datasheet for ABIN1449936  
**anti-PRC1 antibody (Middle Region)**

2 Images

Overview

Quantity:	0.1 mg
Target:	PRC1
Binding Specificity:	Middle Region
Reactivity:	Human, Mouse, Rat
Host:	Rabbit
Clonality:	Polyclonal
Conjugate:	This PRC1 antibody is un-conjugated
Application:	Western Blotting (WB), Immunofluorescence (IF), Immunohistochemistry (Paraffin-embedded Sections) (IHC (p)), Enzyme Immunoassay (EIA)

Product Details

Immunogen:	19 amino acid synthetic peptide near the center of Human PRC1
Isotype:	IgG
Cross-Reactivity (Details):	Species reactivity (tested):Human, Mouse, Rat.
Purification:	Affinity chromatography purified via peptide column

Target Details

Target:	PRC1
Alternative Name:	PRC1 ( <a href="#">PRC1 Products</a> )
Background:	PRC1 (Protein Regulator of Cytokinesis 1) is a key regulator of cytokinesis and has been

## Target Details

---

identified as a substrate for several cyclin-dependent kinases (CDKs). High levels of PRC1 expression occurs during S and G2/M and drops dramatically after mitosis exit and G1 entry. It is located in the nucleus during interphase and binds to the midzone of mitotic spindles during anaphase and is localized to the cell midbody during cytokinesis. Depletion of PRC1 has been shown to prevent cellular cleavage, but it has no effect on nuclear division, demonstrating the importance of PRC1 in mitosis. Synonyms: ASE1, Protein regulator of cytokinesis 1

Gene ID: 9055

NCBI Accession: [NP\\_003972](#)

## Application Details

---

Application Notes: Optimal working dilution should be determined by the investigator.

Restrictions: For Research Use only

## Handling

---

Concentration: 1.0 mg/mL

Buffer: PBS containing 0.02 % Sodium Azide as preservative

Preservative: Sodium azide

Precaution of Use: This product contains sodium azide: a POISONOUS AND HAZARDOUS SUBSTANCE which should be handled by trained staff only.

Handling Advice: Avoid repeated freezing and thawing.

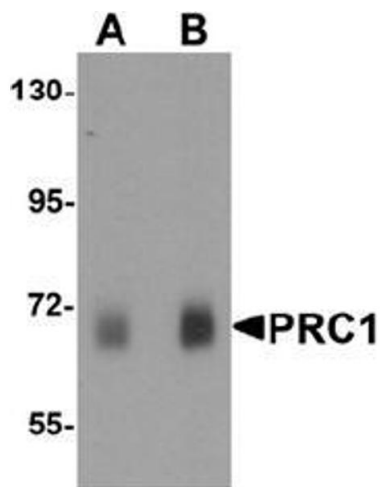
Storage: 4 °C/-20 °C

Storage Comment: Store undiluted at 2-8 °C for one month or (in aliquots) at -20 °C for longer.



#### Immunohistochemistry (Paraffin-embedded Sections)

**Image 1.** Immunohistochemistry of PRC1 in mouse skeletal muscle tissue with PRC1 antibody at 2.5 ug/mL.



#### Western Blotting

**Image 2.** Western blot analysis of PRC1 in human skeletal muscle tissue lysate with Prc1 antibody at (A) 0.5 ug/ml and (B) 1 ug/mL.