

Datasheet for ABIN1449937
anti-WDR18 antibody (C-Term)[Go to Product page](#)

2 Images

Overview

Quantity:	0.1 mg
Target:	WDR18
Binding Specificity:	C-Term
Reactivity:	Human, Mouse, Rat
Host:	Rabbit
Clonality:	Polyclonal
Conjugate:	This WDR18 antibody is un-conjugated
Application:	Western Blotting (WB), Immunofluorescence (IF), Immunohistochemistry (Paraffin-embedded Sections) (IHC (p)), Enzyme Immunoassay (EIA)

Product Details

Immunogen:	17 amino acid synthetic peptide near the carboxy terminus of Human WDR18
Isotype:	IgG
Cross-Reactivity (Details):	Species reactivity (tested): Human, Mouse, Rat.
Purification:	Affinity chromatography purified via peptide column

Target Details

Target:	WDR18
Alternative Name:	WDR18 (WDR18 Products)
Background:	WD repeat domain 18 (WDR18) is a member of the WD repeat protein family, which is involved

Target Details

in a variety of cellular processes, including cell cycle progression, signal transduction, apoptosis, and gene regulation. WD repeats are minimally conserved regions of approximately 40 amino acids that commonly form a tertiary propeller structure. WDR18 is a 432 amino acid protein that contains six WD repeats and is encoded by a gene located on human chromosome 19. WDR18 may play a role during development. The complex PELP1-TEX10-WDR18 is required for the maturation and nucleolar release of the large ribosomal subunit .Synonyms: WD repeat-containing protein 18

Gene ID: 57418

NCBI Accession: [NP_077005](#)

Application Details

Application Notes: Optimal working dilution should be determined by the investigator.

Restrictions: For Research Use only

Handling

Concentration: 1.0 mg/mL

Buffer: PBS containing 0.02 % Sodium Azide as preservative

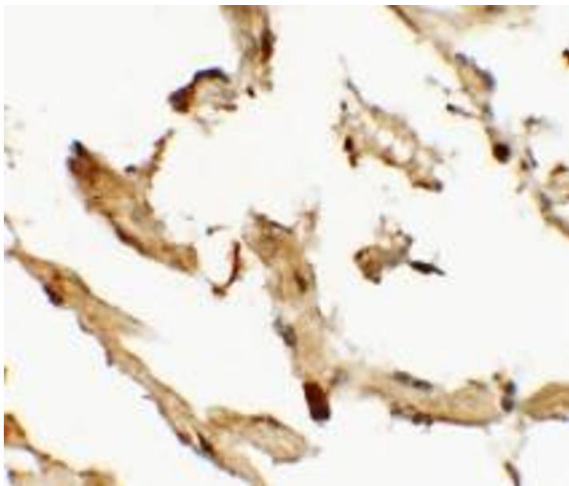
Preservative: Sodium azide

Precaution of Use: This product contains sodium azide: a POISONOUS AND HAZARDOUS SUBSTANCE which should be handled by trained staff only.

Handling Advice: Avoid repeated freezing and thawing.

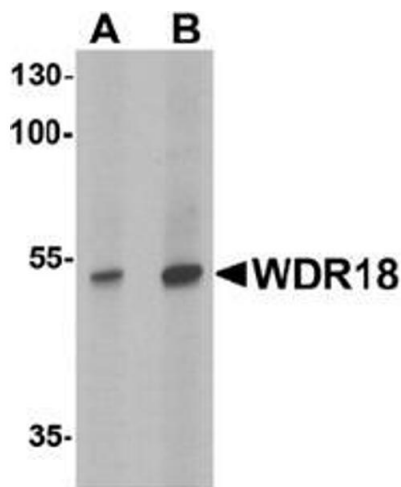
Storage: 4 °C/-20 °C

Storage Comment: Store undiluted at 2-8 °C for one month or (in aliquots) at -20 °C for longer.



Immunohistochemistry (Paraffin-embedded Sections)

Image 1. Immunohistochemistry of WDR18 in human lung tissue with WDR18 antibody at 2.5 ug/mL.



Western Blotting

Image 2. Western blot analysis of WDR18 in rat lung tissue lysate with WDR18 antibody at (A) 0.5 and (B) 1 ug/mL.