

Datasheet for ABIN1449941  
**anti-CRIM1 antibody (C-Term)**[Go to Product page](#)

## 1 Image

## Overview

Quantity:	0.1 mg
Target:	CRIM1
Binding Specificity:	C-Term
Reactivity:	Human
Host:	Rabbit
Clonality:	Polyclonal
Conjugate:	This CRIM1 antibody is un-conjugated
Application:	Western Blotting (WB), Immunofluorescence (IF), Enzyme Immunoassay (EIA)

## Product Details

Immunogen:	17 amino acid synthetic peptide near the carboxy terminus of Human CRIM1
Isotype:	IgG
Purification:	Affinity chromatography purified via peptide column

## Target Details

Target:	CRIM1
Alternative Name:	CRIM1 ( <a href="#">CRIM1 Products</a> )
Background:	CRIM1 (cysteine-rich motor neuron 1), a glycosylated type I transmembrane protein, plays a role in tissue development i.e. capillary formation and maintenance during angiogenesis. It contains an N-terminal IGF-binding protein-like motif and six von Willebrand-like cysteine-rich repeats (CRRs) in its extracellular domain. CRIM1 interacts with BMP4 and BMP7 via the CRRs

## Target Details

and functions as an antagonist. CRIM1 is developmentally expressed in a number of tissues including the pancreas, kidney, placenta, brain and blood vessels. CRIM1 may participate in CNS and placental development by interacting with growth factors involved in motor neuron differentiation and survival. Synonyms: CRIM-1, Cysteine-rich motor neuron 1 protein, S52

Gene ID: 51232

NCBI Accession: [NP\\_057525](#)

Pathways: [Growth Factor Binding](#)

## Application Details

Application Notes: Optimal working dilution should be determined by the investigator.

Restrictions: For Research Use only

## Handling

Concentration: 1.0 mg/mL

Buffer: PBS containing 0.02 % Sodium Azide as preservative

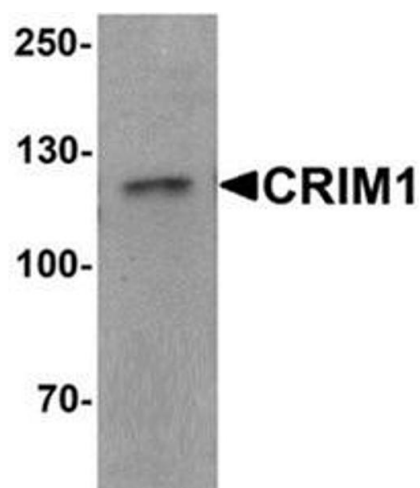
Preservative: Sodium azide

Precaution of Use: This product contains sodium azide: a POISONOUS AND HAZARDOUS SUBSTANCE which should be handled by trained staff only.

Handling Advice: Avoid repeated freezing and thawing.

Storage: 4 °C/-20 °C

Storage Comment: Store undiluted at 2-8 °C for one month or (in aliquots) at -20 °C for longer.



Western Blotting

**Image 1.** Western blot analysis of CRIM1 in Jurkat cell lysate with CRIM1 Antibody at 1 ug/ml.