

Datasheet for ABIN1449943
anti-ZFYVE21 antibody (N-Term)[Go to Product page](#)

1 Image

Overview

Quantity:	0.1 mg
Target:	ZFYVE21
Binding Specificity:	N-Term
Reactivity:	Human, Rat, Mouse
Host:	Rabbit
Clonality:	Polyclonal
Conjugate:	This ZFYVE21 antibody is un-conjugated
Application:	Western Blotting (WB), Immunofluorescence (IF), Enzyme Immunoassay (EIA)

Product Details

Immunogen:	15 amino acid synthetic peptide near the amino terminus of Human ZF21
Isotype:	IgG
Purification:	Affinity chromatography purified via peptide column

Target Details

Target:	ZFYVE21
Alternative Name:	ZFYVE21 (ZFYVE21 Products)
Background:	ZF21 was initially identified as protein that could bind to the cytoplasmic tail of MT1-MMP (Membrane-type 1 matrix metalloproteinase), a potent invasion-promoting protease. ZF21 is a member of a protein family characterized by the presence of a phosphatidylinositol 3-phosphate-binding FYVE domain and regulates focal adhesions (FAs) and cell movement.

Target Details

Knockdown of ZF21 expression resulted in a delay of FA disassembly following induction of synchronous disassembly of FAs by nocodazole treatment, suggesting that ZF21 is involved in FA disassembly. ZF21 contains a noncanonical pleckstrin homology domain that is a possible therapeutic target to treat metastatic cancer. Synonyms: Zinc finger FYVE domain-containing protein 21

Gene ID: 79038

NCBI Accession: [NP_001185882](#)

Application Details

Application Notes: Optimal working dilution should be determined by the investigator.

Restrictions: For Research Use only

Handling

Concentration: 1.0 mg/mL

Buffer: PBS containing 0.02 % Sodium Azide as preservative

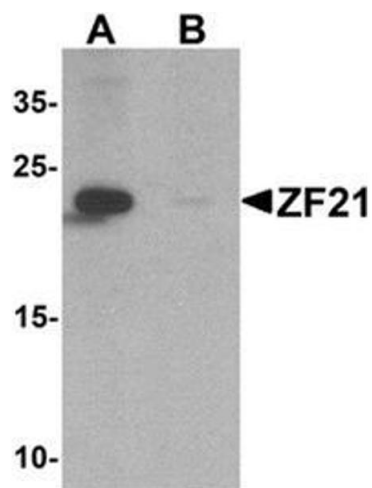
Preservative: Sodium azide

Precaution of Use: This product contains sodium azide: a POISONOUS AND HAZARDOUS SUBSTANCE which should be handled by trained staff only.

Handling Advice: Avoid repeated freezing and thawing.

Storage: 4 °C/-20 °C

Storage Comment: Store undiluted at 2-8 °C for one month or (in aliquots) at -20 °C for longer.



Western Blotting

Image 1. Western blot analysis of ZF21 in 3T3 cell tissue lysate with ZF21 Antibody at 1 µg/ml in (A) the absence and (B) the presence of blocking peptide.