



[Go to Product page](#)

Datasheet for ABIN1449952

## anti-STOX1 antibody (C-Term)

### 1 Image

#### Overview

Quantity:	0.1 mg
Target:	STOX1
Binding Specificity:	C-Term
Reactivity:	Human
Host:	Rabbit
Clonality:	Polyclonal
Conjugate:	This STOX1 antibody is un-conjugated
Application:	Western Blotting (WB), Immunofluorescence (IF), Enzyme Immunoassay (EIA)

#### Product Details

Immunogen:	14 amino acid synthetic peptide near the carboxy terminus of Human STOX1
Isotype:	IgG
Cross-Reactivity (Details):	Species reactivity (tested):Human.
Purification:	Affinity chromatography purified via peptide column

#### Target Details

Target:	STOX1
Alternative Name:	STOX1 ( <a href="#">STOX1 Products</a> )
Background:	STOX1 (Storkhead box 1), also known as PEE4 or C10orf24, is a winged-helix domain containing transcription factor believed to play a role in the differentiation of stem cells. As a

## Target Details

---

DNA-binding protein, STOX1 exists as three alternatively spliced isoforms, designated A, B and C, all of which localize to either the cytoplasm or the nucleus. Defects in STOX1 are the cause of pre-eclampsia/eclampsia 4 (PEE4), also known as gestational proteinuric hypertension. STOX1 was also found to be functionally involved in late-onset Alzheimer's disease. Synonyms: C10orf24, PEE4, Storkhead-box protein 1, winged-helix domain-containing protein

Gene ID: 219736

NCBI Accession: [NP\\_689922](#)

## Application Details

---

Application Notes: Optimal working dilution should be determined by the investigator.

Restrictions: For Research Use only

## Handling

---

Concentration: 1.0 mg/mL

Buffer: PBS containing 0.02 % Sodium Azide as preservative

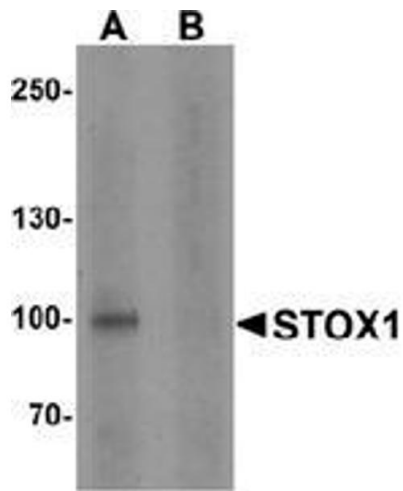
Preservative: Sodium azide

Precaution of Use: This product contains sodium azide: a POISONOUS AND HAZARDOUS SUBSTANCE which should be handled by trained staff only.

Handling Advice: Avoid repeated freezing and thawing.

Storage: 4 °C/-20 °C

Storage Comment: Store undiluted at 2-8 °C for one month or (in aliquots) at -20 °C for longer.



#### Western Blotting

**Image 1.** Western blot analysis of STOX1 in human liver tissue lysate with STOX1 antibody at 1 ug/ml in (A) the absence and (B) the presence of blocking peptide.