



Datasheet for ABIN1449957  
**anti-KPNA7 antibody (N-Term)**



[Go to Product page](#)

1 Image

Overview

Quantity:	0.1 mg
Target:	KPNA7
Binding Specificity:	N-Term
Reactivity:	Human
Host:	Rabbit
Clonality:	Polyclonal
Conjugate:	This KPNA7 antibody is un-conjugated
Application:	Immunohistochemistry (Paraffin-embedded Sections) (IHC (p)), Enzyme Immunoassay (EIA)

Product Details

Immunogen:	13 amino acid synthetic peptide near the amino terminus of Human KPNA7
Isotype:	IgG
Purification:	Affinity chromatography purified via peptide column

Target Details

Target:	KPNA7
Alternative Name:	KPNA7 ( <a href="#">KPNA7 Products</a> )
Background:	Karyopherin, a cytosolic and heterodimeric protein complex consisting of alpha and beta subunits, is responsible for targeting proteins with nuclear localization signals to the nuclear pore complex (NPC) by an energy requiring, Ran-dependent mechanism. The alpha subunit and imported substrate enter the nucleus and accumulate in the nucleoplasm, while the beta

## Target Details

---

subunit accumulates at the NPC. KPNA7 is most closely related to KPNA2, but unlike KPNA2, KPNA7 primarily localizes to the nucleus. It has been suggested that KPNA7 may play a role in the transport of essential nuclear proteins required for early embryogenesis. Synonyms: Importin alpha 8, Importin subunit alpha-8, Karyopherin alpha 7, Karyopherin subunit alpha-7

Gene ID: 402569

NCBI Accession: [NP\\_001139187](#)

Pathways: [Protein targeting to Nucleus](#)

## Application Details

---

Application Notes: Optimal working dilution should be determined by the investigator.

Restrictions: For Research Use only

## Handling

---

Concentration: 1.0 mg/mL

Buffer: PBS containing 0.02 % Sodium Azide as preservative

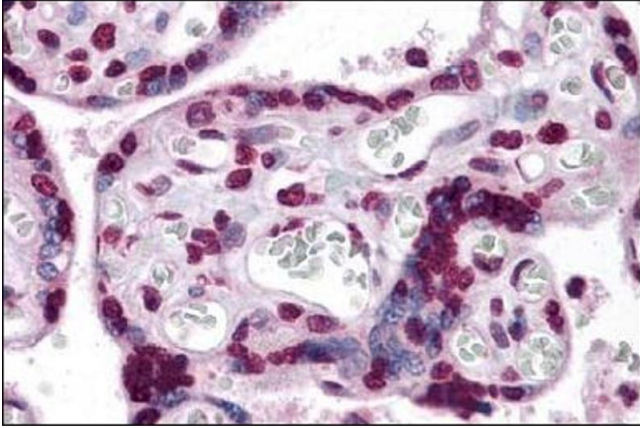
Preservative: Sodium azide

Precaution of Use: This product contains sodium azide: a POISONOUS AND HAZARDOUS SUBSTANCE which should be handled by trained staff only.

Handling Advice: Avoid repeated freezing and thawing.

Storage: 4 °C/-20 °C

Storage Comment: Store undiluted at 2-8 °C for one month or (in aliquots) at -20 °C for longer.



#### Immunohistochemistry (Paraffin-embedded Sections)

**Image 1.** Immunohistochemistry of KPNA7 in Human placenta tissue with KPNA7 antibody at 5 µg/ml.