

Datasheet for ABIN1449969  
**anti-PLA1A antibody (C-Term)**



[Go to Product page](#)

1 Image

## Overview

Quantity:	0.1 mg
Target:	PLA1A
Binding Specificity:	C-Term
Reactivity:	Human, Rat
Host:	Rabbit
Clonality:	Polyclonal
Conjugate:	This PLA1A antibody is un-conjugated
Application:	Western Blotting (WB), Immunofluorescence (IF), Enzyme Immunoassay (EIA)

## Product Details

Immunogen:	17 amino acid synthetic peptide near the carboxy terminus of Human PLA1A
Isotype:	IgG
Cross-Reactivity (Details):	Species reactivity (tested): Human, Rat.
Purification:	Affinity chromatography purified via peptide column

## Target Details

Target:	PLA1A
Alternative Name:	PLA1A ( <a href="#">PLA1A Products</a> )
Background:	PLA1A is a phospholipase that hydrolyzes fatty acids at the sn-1 position of phosphatidylserine and 1-acyl-2-lysophosphatidylserine. This secreted protein hydrolyzes phosphatidylserine (PS)

## Target Details

---

in liposomes and can also hydrolyze PS in apoptotic cells and activate platelets where the resulting 2-acyl-lysophosphatidylserine acts as a lipid mediator for mast cells, T cells, and neural cells, suggesting that a major function of PLA1A may be the production of lysophospholipid mediators. PLA1A is upregulated in rat peripheral blood cells bearing long-term surviving cardiac allograft. PLA1A is also expressed in human THP-1-derived macrophages and this expression is upregulated in cells treated with lipopolysaccharide, a TLR4 ligand. This upregulation is inhibited with corticosteroids, which are often used at high dosages to suppress chronic allograft rejection. Synonyms: NMD, PSPLA1, Phospholipase A1 member A

---

Molecular Weight: 50 kDa

---

Gene ID: 51365

---

NCBI Accession: [NP\\_056984](#)

## Application Details

---

Application Notes: Optimal working dilution should be determined by the investigator.

---

Restrictions: For Research Use only

## Handling

---

Concentration: 1.0 mg/mL

---

Buffer: PBS containing 0.02 % Sodium Azide as preservative

---

Preservative: Sodium azide

---

Precaution of Use: This product contains sodium azide: a POISONOUS AND HAZARDOUS SUBSTANCE which should be handled by trained staff only.

---

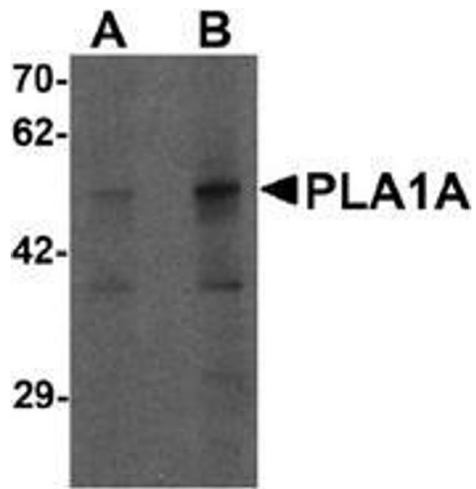
Handling Advice: Avoid repeated freezing and thawing.

---

Storage: 4 °C/-20 °C

---

Storage Comment: Store undiluted at 2-8 °C for one month or (in aliquots) at -20 °C for longer.



#### Western Blotting

**Image 1.** Western blot analysis of PLA1A in human kidney tissue lysate with PLA1A antibody at (A) 1 and (B) 2 ug/mL.