

Datasheet for ABIN1449972
anti-PLAGL2 antibody (N-Term)[Go to Product page](#)

1 Image

Overview

Quantity:	0.1 mg
Target:	PLAGL2
Binding Specificity:	N-Term
Reactivity:	Human, Mouse, Rat
Host:	Rabbit
Clonality:	Polyclonal
Conjugate:	This PLAGL2 antibody is un-conjugated
Application:	Western Blotting (WB), Immunofluorescence (IF), Enzyme Immunoassay (EIA)

Product Details

Immunogen:	19 amino acid synthetic peptide near the amino terminus of Human PLAGL2
Isotype:	IgG
Purification:	Affinity chromatography purified via peptide column

Target Details

Target:	PLAGL2
Alternative Name:	PLAGL2 (PLAGL2 Products)
Background:	The PLAG (Pleiomorphic adenoma gene) family of zinc finger proteins include PLAG1, ZAC1 and PLAG-like 2 (PLAGL2). PLAG1 is the target gene for the pleiomorphic adenomas of the salivary gland. ZAC1 (PLAGL1) concomitantly controls apoptosis and cell cycle arrest through separate pathways. ZAC1 also acts as a transcriptional cofactor for nuclear receptors. PLAGL2

Target Details

belongs to the krueppel C2H2-type zinc-finger protein family and contains 6 C2H2-type zinc fingers. It functions as a positive regulator of transcription and localizes to the nucleus. PLAGL2 is ubiquitously expressed with particular abundance in spleen, lung and testis, where it may be involved in cell cycle arrest and apoptosis of tumor cells. Synonyms: KIAA0198, Pleiomorphic adenoma-like protein 2, Zinc finger protein PLAGL2

Molecular Weight: 55 kDa

Gene ID: 5326

NCBI Accession: [NP_002648](#)

Application Details

Application Notes: Optimal working dilution should be determined by the investigator.

Restrictions: For Research Use only

Handling

Concentration: 1.0 mg/mL

Buffer: PBS containing 0.02 % Sodium Azide as preservative

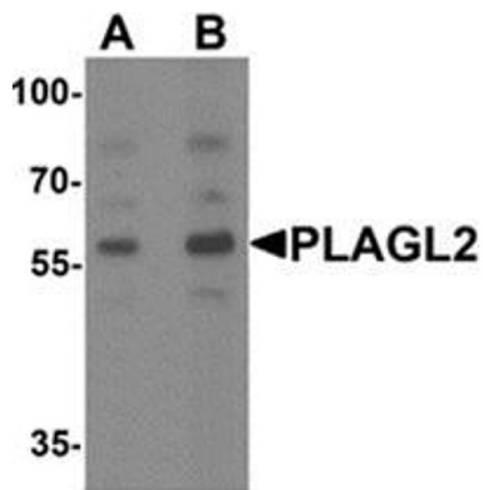
Preservative: Sodium azide

Precaution of Use: This product contains sodium azide: a POISONOUS AND HAZARDOUS SUBSTANCE which should be handled by trained staff only.

Handling Advice: Avoid repeated freezing and thawing.

Storage: -20 °C

Storage Comment: Store the antibody (in aliquots) at -20 °C.



Western Blotting

Image 1. Western blot analysis of PLAGL2 in rat brain tissue lysate with PLAGL2 Antibody at (A) 1 and (B) 2 ug/ml.