



[Go to Product page](#)

Datasheet for ABIN1449980

## anti-SGSM1 antibody (Middle Region)

### 1 Image

#### Overview

Quantity:	0.1 mg
Target:	SGSM1
Binding Specificity:	Middle Region
Reactivity:	Human, Mouse, Rat
Host:	Rabbit
Clonality:	Polyclonal
Conjugate:	This SGSM1 antibody is un-conjugated
Application:	Western Blotting (WB), Immunofluorescence (IF), Enzyme Immunoassay (EIA)

#### Product Details

Immunogen:	SGSM1 antibody was raised against a 17 amino acid synthetic peptide near the center of human SGSM1.
Isotype:	IgG
Purification:	Affinity chromatography purified via peptide column

#### Target Details

Target:	SGSM1
Alternative Name:	SGSM1 ( <a href="#">SGSM1 Products</a> )
Background:	Small G proteins such as RAP and RAB proteins are the key molecules in intracellular signal transduction and vesicle transportation. A novel protein family small G protein signaling modulator (SGSM) consisting of three members SGSM1-3 bind to RAP and RAB family

## Target Details

---

proteins. All three SGSM proteins possess both a RUN domain and a TBC domain. SGSM1 (RUTBC2) is a 1,148 amino acid protein that localizes to the Golgi apparatus and is mainly expressed in the CNS. SGSM1 interacts with RAP and RAB subfamily members of the small G proteins, and function as modulators of RAP and RAB-mediated neuronal signal transduction and vesicular transportation pathways. Synonyms: RUTBC2, Small G protein signaling modulator 1

---

Molecular Weight: 126 kDa

---

Gene ID: 129049

---

NCBI Accession: [NP\\_001035037](#)

## Application Details

---

Application Notes: Optimal working dilution should be determined by the investigator.

---

Restrictions: For Research Use only

## Handling

---

Concentration: 1.0 mg/mL

---

Buffer: PBS containing 0.02 % Sodium Azide as preservative

---

Preservative: Sodium azide

---

Precaution of Use: This product contains sodium azide: a POISONOUS AND HAZARDOUS SUBSTANCE which should be handled by trained staff only.

---

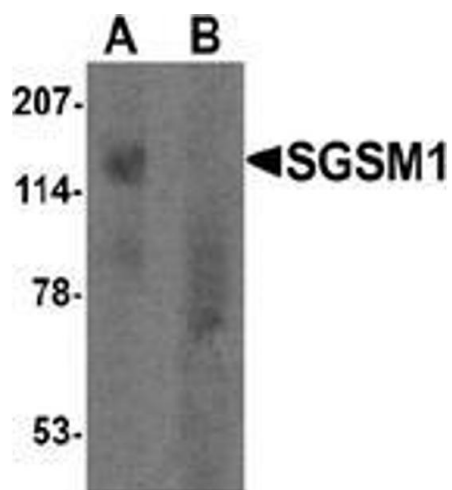
Handling Advice: Avoid repeated freezing and thawing.

---

Storage: -20 °C

---

Storage Comment: Store the antibody (in aliquots) at -20 °C.



#### Western Blotting

**Image 1.** Western blot analysis of SGSM1 in human cerebellum tissue lysate with SGSM1 Antibody at 1  $\mu\text{g}/\text{ml}$  in (A) the absence and (B) the presence of blocking peptide.