

Datasheet for ABIN1449982  
**anti-SHQ1 antibody (N-Term)**



[Go to Product page](#)

1 Image

## Overview

Quantity:	0.1 mg
Target:	SHQ1
Binding Specificity:	N-Term
Reactivity:	Human
Host:	Rabbit
Clonality:	Polyclonal
Conjugate:	This SHQ1 antibody is un-conjugated
Application:	Western Blotting (WB), Immunofluorescence (IF), Enzyme Immunoassay (EIA)

## Product Details

Immunogen:	17 amino acid synthetic peptide near the amino terminus of Human SHQ1
Isotype:	IgG
Cross-Reactivity (Details):	Species reactivity (tested):Human.
Purification:	Affinity chromatography purified via peptide column

## Target Details

Target:	SHQ1
Alternative Name:	SHQ1 ( <a href="#">SHQ1 Products</a> )
Background:	SHQ1 is the human homolog of yeast Shq1p, a protein that acts as an accessory factor in the assembly of H/ACA ribonucleoproteins. SHQ1 has been shown to bind the major H/ACA core

## Target Details

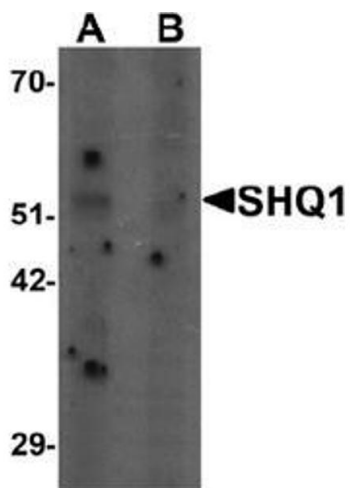
	protein and the pseudouridine synthase NAP57, but precedes the assembly role of NAF1 and of the other H/ACA core proteins. SHQ1 assists in the assembly of H/ACA-box ribonucleoproteins that function in the processing of ribosomal RNAs, modification of spliceosomal small nuclear RNAs, and stabilization of telomerase.Synonyms: Protein SHQ1 homolog
Molecular Weight:	63 kDa
Gene ID:	55164
NCBI Accession:	<a href="#">NP_060600</a>
Pathways:	<a href="#">Ribonucleoprotein Complex Subunit Organization</a>

## Application Details

Application Notes:	Optimal working dilution should be determined by the investigator.
Restrictions:	For Research Use only

## Handling

Concentration:	1.0 mg/mL
Buffer:	PBS containing 0.02 % Sodium Azide as preservative
Preservative:	Sodium azide
Precaution of Use:	This product contains sodium azide: a POISONOUS AND HAZARDOUS SUBSTANCE which should be handled by trained staff only.
Handling Advice:	Avoid repeated freezing and thawing.
Storage:	4 °C/-20 °C
Storage Comment:	Store undiluted at 2-8 °C for one month or (in aliquots) at -20 °C for longer.



Western Blotting

**Image 1.** Western blot analysis of SHQ1 in human heart tissue lysate with SHQ1 Antibody at 1 ug/mL in (A) the absence and (B) the presence of blocking peptide.