

Datasheet for ABIN1449987
anti-PHLPP1 antibody (N-Term)[Go to Product page](#)

1 Image

Overview

Quantity:	0.1 mg
Target:	PHLPP1
Binding Specificity:	N-Term
Reactivity:	Human
Host:	Rabbit
Clonality:	Polyclonal
Conjugate:	This PHLPP1 antibody is un-conjugated
Application:	Western Blotting (WB), Enzyme Immunoassay (EIA)

Product Details

Immunogen:	PHLPP1 antibody was raised against an 18 amino acid synthetic peptide near the amino terminus of Human PHLPP1
Isotype:	IgG
Purification:	Affinity chromatography purified via peptide column

Target Details

Target:	PHLPP1
Alternative Name:	PHLPP1 (PHLPP1 Products)
Background:	PHLPP1 is a member of the serine/threonine phosphatase family, which are important regulators of Akt serine-threonine kinases (AKT1, AKT2, AKT3) and conventional/novel protein kinase C (PKC) isoforms. PHLPP1 and PHLPP2 have a similar domain structure and have been

Target Details

shown to dephosphorylate and inactivate, distinct Akt isoforms, at one of the two critical phosphorylation sites required for activation: Serine473. PHLPP2 dephosphorylates AKT1 and AKT3, whereas PHLPP1 is specific for AKT2 and AKT3. PHLPP1 promotes apoptosis and may act as a tumor suppressor. Increased expression of PHLPP1 may also play a role in obesity and type 2 diabetes by interfering with Akt-mediated insulin signaling. Synonyms: KIAA0606, PH domain leucine-rich repeat-containing protein phosphatase 1, PHLPP, PLEKHE1, Pleckstrin homology domain-containing family E member 1, SCOP, Suprachiasmatic nucleus circadian oscillatory protein

Molecular Weight: 189 kDa

Gene ID: 23239

NCBI Accession: [NP_919431](#)

Pathways: [PI3K-Akt Signaling](#), [Fc-epsilon Receptor Signaling Pathway](#), [Neurotrophin Signaling Pathway](#)

Application Details

Application Notes: Optimal working dilution should be determined by the investigator.

Restrictions: For Research Use only

Handling

Concentration: 1.0 mg/mL

Buffer: PBS containing 0.02 % Sodium Azide as preservative

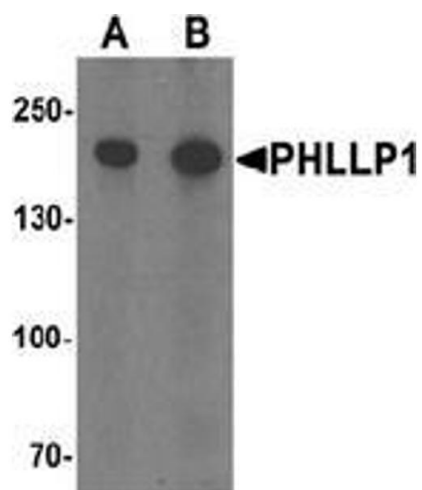
Preservative: Sodium azide

Precaution of Use: This product contains sodium azide: a POISONOUS AND HAZARDOUS SUBSTANCE which should be handled by trained staff only.

Handling Advice: Avoid repeated freezing and thawing.

Storage: 4 °C/-20 °C

Storage Comment: Store undiluted at 2-8 °C for one month or (in aliquots) at -20 °C for longer.



Western Blotting

Image 1. Western blot analysis of PHLPP1 in SW480 cell lysate with PHLPP1 Antibody at (A) 1 and (B) 2 μ g/ml.