

Datasheet for ABIN1449990
anti-TET3 antibody (C-Term)



[Go to Product page](#)

1 Image

Overview

| | |
|----------------------|--|
| Quantity: | 0.1 mg |
| Target: | TET3 |
| Binding Specificity: | C-Term |
| Reactivity: | Human, Mouse, Rat |
| Host: | Rabbit |
| Clonality: | Polyclonal |
| Conjugate: | This TET3 antibody is un-conjugated |
| Application: | Western Blotting (WB), Immunofluorescence (IF), Enzyme Immunoassay (EIA) |

Product Details

| | |
|---------------|---|
| Immunogen: | A 17 amino acid synthetic peptide near the carboxy terminus of Human TET3 |
| Isotype: | IgG |
| Purification: | Affinity chromatography purified via peptide column |

Target Details

| | |
|-------------------|--|
| Target: | TET3 |
| Alternative Name: | MGC22014 (TET3 Products) |
| Background: | TET3, a member of the ten-eleven-translocation (TET) family of genes, is a methylcytosine dioxygenase that catalyzes the conversion of methylcytosine to 5-hydroxymethylcytosine and is most abundantly expressed in hematopoietic cells. Unlike the related TET2 protein, mutations in TET3 have not been observed in any myeloid malignancies. TET3 has been shown to be |

Target Details

involved in the demethylation of zygotic DNA before the first mitosis and has been suggested to be involved in the epigenetic reprogramming of the zygotic paternal DNA following natural fertilization and may also contribute to somatic cell nuclear reprogramming during animal cloning. Synonyms: KIAA0401, TET3

Molecular Weight: 183 kDa

Gene ID: 200424

NCBI Accession: [NP_659430](#)

Pathways: [Warburg Effect](#)

Application Details

Application Notes: Optimal working dilution should be determined by the investigator.

Restrictions: For Research Use only

Handling

Concentration: 1.0 mg/mL

Buffer: PBS containing 0.02 % Sodium Azide as preservative

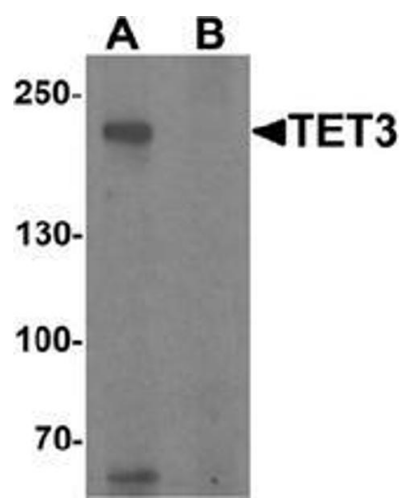
Preservative: Sodium azide

Precaution of Use: This product contains sodium azide: a POISONOUS AND HAZARDOUS SUBSTANCE which should be handled by trained staff only.

Handling Advice: Avoid repeated freezing and thawing.

Storage: 4 °C/-20 °C

Storage Comment: Store undiluted at 2-8 °C for one month or (in aliquots) at -20 °C for longer.



Western Blotting

Image 1. Western blot analysis of TET3 in SK-N-SH cell lysate with TET3 Antibody at 1 µg/ml in (A) the absence and (B) the presence of blocking peptide