

Datasheet for ABIN1449996
anti-BCAR3 antibody (N-Term)[Go to Product page](#)

1 Image

Overview

Quantity:	0.1 mg
Target:	BCAR3
Binding Specificity:	N-Term
Reactivity:	Human, Mouse, Rat
Host:	Rabbit
Clonality:	Polyclonal
Conjugate:	This BCAR3 antibody is un-conjugated
Application:	Western Blotting (WB), Immunofluorescence (IF), Enzyme Immunoassay (EIA)

Product Details

Immunogen:	A 16 amino acid synthetic peptide near the amino terminus of Human BCAR3
Isotype:	IgG
Purification:	Affinity chromatography purified via peptide column

Target Details

Target:	BCAR3
Alternative Name:	BCAR3 / SH2D3B (BCAR3 Products)
Background:	Breast cancer anti-estrogen resistance 3 (BCAR3) was identified in the search for genes involved in the development of estrogen resistance. It contains a putative src homology 2 (SH2) domain and is partly homologous to the cell division cycle protein CDC48. BCAR3 is a binding partner with Cas, an adapter molecule that plays a role in cell proliferation, survival, cell

Target Details

adhesion, and mobility. BCAR3 functions synergistically with Cas to enhance Src activation and promote cell migration, and has been suggested to regulate Cas/Src association, Src kinase activity, and breast cancer adhesion signaling. Synonyms: Breast cancer anti-estrogen resistance protein 3, NSP2, Novel SH2-containing protein 2, SH2 domain-containing protein 3B

Molecular Weight: 91 kDa

Gene ID: 8412

NCBI Accession: [NP_003558](#)

Application Details

Application Notes: Optimal working dilution should be determined by the investigator.

Restrictions: For Research Use only

Handling

Concentration: 1.0 mg/mL

Buffer: PBS containing 0.02 % Sodium Azide as preservative

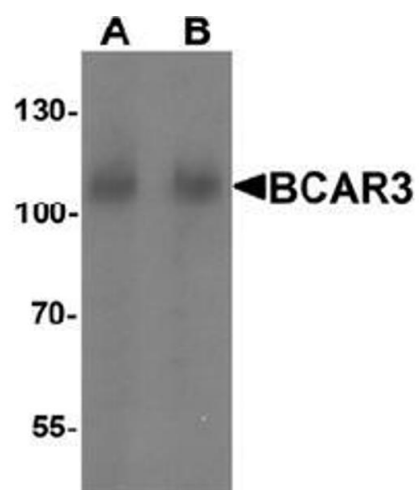
Preservative: Sodium azide

Precaution of Use: This product contains sodium azide: a POISONOUS AND HAZARDOUS SUBSTANCE which should be handled by trained staff only.

Handling Advice: Avoid repeated freezing and thawing.

Storage: 4 °C/-20 °C

Storage Comment: Store undiluted at 2-8 °C for one month or (in aliquots) at -20 °C for longer.



Western Blotting

Image 1. Western blot analysis of BCAR3 in mouse kidney tissue lysate with BCAR3 Antibody at A) 1 and (B) 2 µg/ml.