



Datasheet for ABIN1449998 anti-TOX antibody (N-Term)



[Go to Product page](#)

1 Image

Overview

Quantity:	0.1 mg
Target:	TOX
Binding Specificity:	N-Term
Reactivity:	Human
Host:	Rabbit
Clonality:	Polyclonal
Conjugate:	This TOX antibody is un-conjugated
Application:	Western Blotting (WB), Immunofluorescence (IF), Enzyme Immunoassay (EIA)

Product Details

Immunogen:	A 17 amino acid synthetic peptide near the amino terminus of Human TOX
Isotype:	IgG
Purification:	Affinity chromatography purified via peptide column

Target Details

Target:	TOX
Alternative Name:	TOX (TOX Products)
Background:	TOX (thymocyte selection-associated high mobility group (HMG) box protein) is a member of the HMG box family of DNA-binding proteins and likely plays a role in the regulation of T-cell development (1,2). It is a 526 amino acid nuclear protein and the expression of TOX is upregulated by pre-T cell receptor (pre-TCR) and TCR activation in immature thymocytes. TOX-

Target Details

mediated positive selection is associated with up-regulation of RUNX3 and is calcineurin dependent. TOX-dependent transition to the CD4+CD8 stage is required for development of class II major histocompatibility complex-specific T cells.Synonyms: KIAA0808, Thymocyte selection-associated high mobility group box protein TOX, Thymus high mobility group box protein TOX

Molecular Weight: 58 kDa

Gene ID: 9760

NCBI Accession: [NP_055544](#)

Application Details

Application Notes: Optimal working dilution should be determined by the investigator.

Restrictions: For Research Use only

Handling

Concentration: 1.0 mg/mL

Buffer: PBS containing 0.02 % Sodium Azide as preservative

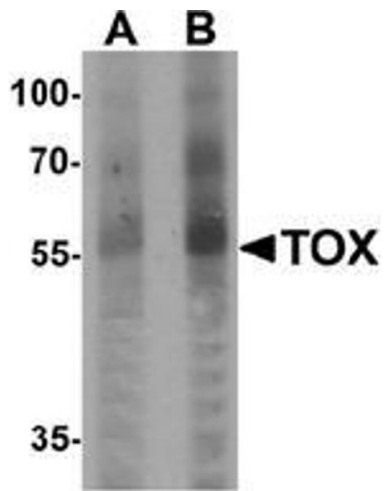
Preservative: Sodium azide

Precaution of Use: This product contains sodium azide: a POISONOUS AND HAZARDOUS SUBSTANCE which should be handled by trained staff only.

Handling Advice: Avoid repeated freezing and thawing.

Storage: 4 °C/-20 °C

Storage Comment: Store undiluted at 2-8 °C for one month or (in aliquots) at -20 °C for longer.



Western Blotting

Image 1. Western blot analysis of TOX in human colon tissue lysate with TOX Antibody at (A) 1 and (B) 2 $\mu\text{g}/\text{ml}$.