

Datasheet for ABIN1450011  
**anti-CENPW antibody (N-Term)**



[Go to Product page](#)

1 Image

## Overview

Quantity:	0.1 mg
Target:	CENPW
Binding Specificity:	N-Term
Reactivity:	Human, Mouse, Rat
Host:	Rabbit
Clonality:	Polyclonal
Conjugate:	This CENPW antibody is un-conjugated
Application:	Western Blotting (WB), Enzyme Immunoassay (EIA)

## Product Details

Immunogen:	16 amino acid synthetic peptide near the amino terminus of Human CENPW
Isotype:	IgG
Cross-Reactivity (Details):	Species reactivity (tested): Human, Mouse, Rat.
Purification:	Affinity chromatography purified via peptide column

## Target Details

Target:	CENPW
Alternative Name:	CENP-W ( <a href="#">CENPW Products</a> )
Background:	CENPW was initially identified as a gene that was upregulated in multiple cancers, and whose overexpression in mouse fibroblast cells gave rise to distinct cancer-specific phenotypes. It was

## Target Details

later found to be a nuclear protein that associated with CENPT, a component of CENPA nucleosome complex in the centromere, and is required for proper kinetochore function. CENPW also specifically interacts with the nucleolar phosphoprotein nucleophosmin, also known as B23 It has been suggested that nucleophosmin functions in the assembly of the kinetochore by interacting with CENPW during interphase. Overexpression of CENPW in the SKOV-3 human ovarian cancer cell line as well as in the zebrafish embryo led to apoptosis, suggesting that high levels of CENPW induces apoptotic cell death.Synonyms: C6orf173, CENPW, CUG2, Cancer-up-regulated gene 2 protein, Centromere protein W

Gene ID: 387103

NCBI Accession: [NP\\_001012525](#)

## Application Details

Application Notes: Optimal working dilution should be determined by the investigator.

Restrictions: For Research Use only

## Handling

Concentration: 1.0 mg/mL

Buffer: PBS containing 0.02 % Sodium Azide as preservative

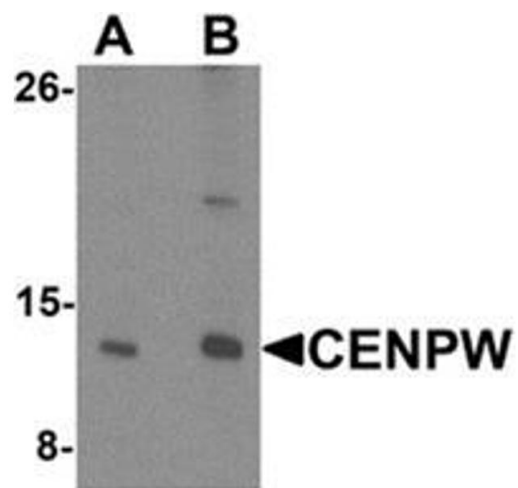
Preservative: Sodium azide

Precaution of Use: This product contains sodium azide: a POISONOUS AND HAZARDOUS SUBSTANCE which should be handled by trained staff only.

Handling Advice: Avoid repeated freezing and thawing.

Storage: 4 °C/-20 °C

Storage Comment: Store undiluted at 2-8 °C for one month or (in aliquots) at -20 °C for longer.



Western Blotting

**Image 1.** Western blot analysis of CENPW in HeLa cell lysate lysate with CENPW Antibody at (A) 0.5 and (B) 1 ug/mL.