



[Go to Product page](#)

Datasheet for ABIN1450015  
**anti-SLAIN2 antibody (N-Term)**

1 Image

Overview

Quantity:	0.1 mg
Target:	SLAIN2
Binding Specificity:	N-Term
Reactivity:	Human
Host:	Rabbit
Clonality:	Polyclonal
Conjugate:	This SLAIN2 antibody is un-conjugated
Application:	Immunohistochemistry (Paraffin-embedded Sections) (IHC (p)), Enzyme Immunoassay (EIA)

Product Details

Immunogen:	A 14 amino acid synthetic peptide near the amino terminus of Human SLAIN2
Isotype:	IgG
Purification:	Affinity chromatography purified via peptide column

Target Details

Target:	SLAIN2
Alternative Name:	SLAIN2 ( <a href="#">SLAIN2 Products</a> )
Background:	SLAIN2 is closely related to SLAIN1, a novel stem cell protein that is expressed at the stem cell and epiblast stages. Unlike SLAIN1, SLAIN2 is widely expressed and is thought to play a role in regulating microtubule (MT) growth and organization (1,2). SLAIN2 binds to end-binding proteins (EBs), cytoplasmic linker proteins (CLIPs) such as CLIP170, CLIP-associated proteins,

## Target Details

and interacts with the MT polymerase ch-TOG. Depletion of SLAIN2 using RNAi led to disorganization of the radial MT array, indicating its importance in the regulation of MT growth and organization. Synonyms: KIAA1458, SLAIN motif-containing protein 2

Molecular Weight: 64 kDa

Gene ID: 57606

## Application Details

Application Notes: Optimal working dilution should be determined by the investigator.

Restrictions: For Research Use only

## Handling

Concentration: 1.0 mg/mL

Buffer: PBS containing 0.02 % Sodium Azide as preservative

Preservative: Sodium azide

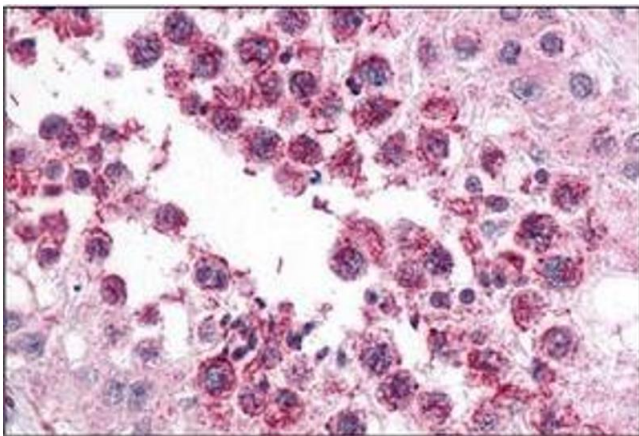
Precaution of Use: This product contains sodium azide: a POISONOUS AND HAZARDOUS SUBSTANCE which should be handled by trained staff only.

Handling Advice: Avoid repeated freezing and thawing.

Storage: 4 °C/-20 °C

Storage Comment: Store undiluted at 2-8 °C for one month or (in aliquots) at -20 °C for longer.

## Images



### Immunohistochemistry (Paraffin-embedded Sections)

**Image 1.** Immunohistochemistry of SLAIN2 in human testis with SLAIN2 Antibody at 5 µg/ml.