



[Go to Product page](#)

Datasheet for ABIN1450020

anti-TSPY1 antibody (C-Term, Isoform 1)

1 Image

Overview

Quantity:	0.1 mg
Target:	TSPY1
Binding Specificity:	C-Term, Isoform 1
Reactivity:	Human, Mouse
Host:	Rabbit
Clonality:	Polyclonal
Conjugate:	This TSPY1 antibody is un-conjugated
Application:	Western Blotting (WB), Enzyme Immunoassay (EIA)

Product Details

Immunogen:	Rabbit polyclonal TSPY1S antibody was raised against a 13 amino acid peptide near the carboxy terminus of human TSPY1S.
Isotype:	IgG
Purification:	Affinity chromatography purified via peptide column

Target Details

Target:	TSPY1
Alternative Name:	TSPY1 / TSPY (TSPY1 Products)
Background:	Testis-specific protein on Y chromosome (TSPY1) is an ampliconic gene on the Y chromosome that has been associated with gonadoblastoma. Recent experiments have shown that in androgen-dependent testicular germ-cell tumors, TSPY1 can repress the androgen-bound

Target Details

androgen receptor (AR), a member of the nuclear steroid hormone receptor family that acts as a ligand-inducible transcription factor, suggesting that TSPY1 is a repressor of cell proliferation in germ-cell tumors and potentially in normal gonadal cells during early development. Two distinct isoforms of TSPY1, TSPY1L and TSPY1S, are known to exist. Synonyms: CT78, Cancer/testis antigen 78, Testis-specific Y-encoded protein 1

Molecular Weight: 32 kDa

Gene ID: 7258

NCBI Accession: [NP_001184171](#)

Application Details

Application Notes: Optimal working dilution should be determined by the investigator.

Restrictions: For Research Use only

Handling

Concentration: 1.0 mg/mL

Buffer: PBS containing 0.02 % Sodium Azide as preservative

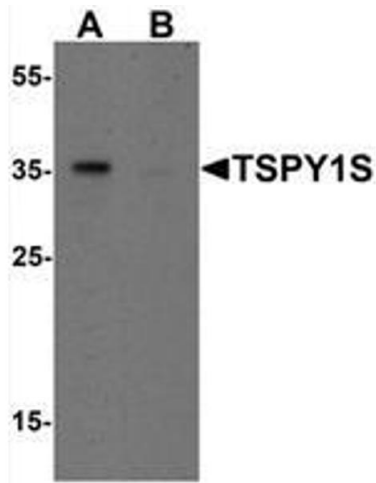
Preservative: Sodium azide

Precaution of Use: This product contains sodium azide: a POISONOUS AND HAZARDOUS SUBSTANCE which should be handled by trained staff only.

Handling Advice: Avoid repeated freezing and thawing.

Storage: -20 °C

Storage Comment: Store the antibody (in aliquots) at -20 °C.



Western Blotting

Image 1. Western blot analysis of TSPY1S in A20 cell lysate with TSPY1S Antibody at 1 $\mu\text{g}/\text{mL}$ in (A) the absence and (B) the presence of blocking peptide