

Datasheet for ABIN1450021  
**anti-TSPY1 antibody (C-Term, Isoform 2)**



[Go to Product page](#)

1 Image

## Overview

Quantity:	0.1 mg
Target:	TSPY1
Binding Specificity:	C-Term, Isoform 2
Reactivity:	Human, Mouse
Host:	Rabbit
Clonality:	Polyclonal
Conjugate:	This TSPY1 antibody is un-conjugated
Application:	Western Blotting (WB), Enzyme Immunoassay (EIA)

## Product Details

Immunogen:	A 20 amino acid peptide near the carboxy terminus of human TSPY1L.
Isotype:	IgG
Purification:	Affinity chromatography purified via peptide column

## Target Details

Target:	TSPY1
Alternative Name:	TSPY1 / TSPY ( <a href="#">TSPY1 Products</a> )
Background:	Testis-specific protein on Y chromosome (TSPY1) is an ampliconic gene on the Y chromosome that has been associated with gonadoblastoma. Recent experiments have shown that in androgen-dependent testicular germ-cell tumors, TSPY1 can repress the androgen-bound androgen receptor (AR), a member of the nuclear steroid hormone receptor family that acts as

## Target Details

---

a ligand-inducible transcription factor, suggesting that TSPY1 is a repressor of cell proliferation in germ-cell tumors and potentially in normal gonadal cells during early development. Two distinct isoforms of TSPY1, TSPY1L and TSPY1S, are known to exist. Synonyms: CT78, Cancer/testis antigen 78, Testis-specific Y-encoded protein 1

---

Molecular Weight: 34 kDa

---

Gene ID: 7258

---

NCBI Accession: [NP\\_003299](#)

## Application Details

---

Application Notes: Optimal working dilution should be determined by the investigator.

---

Restrictions: For Research Use only

## Handling

---

Concentration: 1.0 mg/mL

---

Buffer: PBS containing 0.02 % Sodium Azide as preservative

---

Preservative: Sodium azide

---

Precaution of Use: This product contains sodium azide: a POISONOUS AND HAZARDOUS SUBSTANCE which should be handled by trained staff only.

---

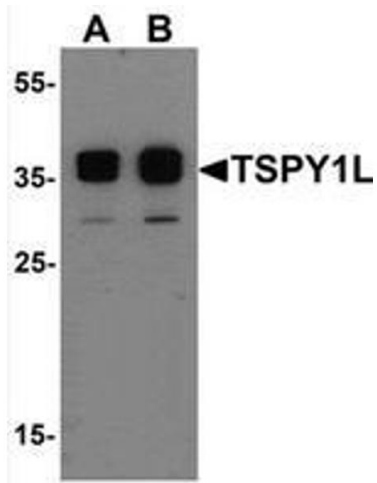
Handling Advice: Avoid repeated freezing and thawing.

---

Storage: 4 °C/-20 °C

---

Storage Comment: Store undiluted at 2-8 °C for one month or (in aliquots) at -20 °C for longer.



### Western Blotting

**Image 1.** Western blot analysis of TSPY1L in A20 cell lysate with TSPY1L Antibody at (A) 0.5 and (B) 1 µg/mL