

Datasheet for ABIN1450022
anti-SHROOM3 antibody (Middle Region)[Go to Product page](#)

1 Image

Overview

Quantity:	0.1 mg
Target:	SHROOM3
Binding Specificity:	Middle Region
Reactivity:	Human
Host:	Rabbit
Clonality:	Polyclonal
Conjugate:	This SHROOM3 antibody is un-conjugated
Application:	Western Blotting (WB), Enzyme Immunoassay (EIA)

Product Details

Immunogen:	Rabbit polyclonal SHROOM3 antibody was raised against an 18 amino acid peptide near the center of Human SHROOM3
Isotype:	IgG
Purification:	Affinity chromatography purified via peptide column

Target Details

Target:	SHROOM3
Alternative Name:	SHROOM3 (SHROOM3 Products)
Background:	SHROOM family members play diverse roles in the development of the nervous system and other tissues. SHROOM3 is an actin-binding protein is a regulator of the microtubule cytoskeleton during epithelial morphogenesis and is sufficient and necessary to induce a

Target Details

redistribution of the microtubule regulator gamma-tubulin. It is necessary for both apiscobasal cell elongation and apical constriction in the neural epithelium (2,3) SHROOM3 has also been shown to be essential for cell shape changes and morphogenesis in the developing vertebrate gut, with its transcription relying on the Pitx1 transcription factor. Synonyms: APXL3, F-actin-binding, SHRM, SHROOM family member 3, ShrmL

Molecular Weight: 220 kDa

Gene ID: 57619

NCBI Accession: [NP_065910](#)

Pathways: [Tube Formation](#), [Asymmetric Protein Localization](#)

Application Details

Application Notes: Optimal working dilution should be determined by the investigator.

Restrictions: For Research Use only

Handling

Concentration: 1.0 mg/mL

Buffer: PBS containing 0.02 % Sodium Azide as preservative

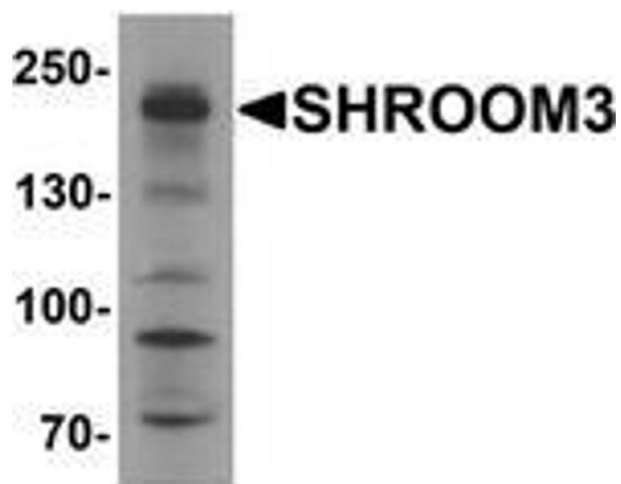
Preservative: Sodium azide

Precaution of Use: This product contains sodium azide: a POISONOUS AND HAZARDOUS SUBSTANCE which should be handled by trained staff only.

Handling Advice: Avoid repeated freezing and thawing.

Storage: 4 °C/-20 °C

Storage Comment: Store undiluted at 2-8 °C for one month or (in aliquots) at -20 °C for longer.



Western Blotting

Image 1. Western blot analysis of SHROOM3 in SK-N-SH cell lysate with SHROOM3 Antibody at 1 µg/ml