

Datasheet for ABIN1450028  
**anti-FOXH1 antibody (N-Term)**



[Go to Product page](#)

1 Image

## Overview

Quantity:	0.1 mg
Target:	FOXH1
Binding Specificity:	N-Term
Reactivity:	Human, Mouse, Rat
Host:	Rabbit
Clonality:	Polyclonal
Conjugate:	This FOXH1 antibody is un-conjugated
Application:	Western Blotting (WB), Enzyme Immunoassay (EIA)

## Product Details

Immunogen:	Rabbit polyclonal FOXH1 antibody was raised against a 19 amino acid peptide near the amino terminus of human FOXH1.
Isotype:	IgG
Purification:	Affinity chromatography purified via peptide column

## Target Details

Target:	FOXH1
Alternative Name:	FOXH1 / FAST1 ( <a href="#">FOXH1 Products</a> )
Background:	FOXH1 is a member of the Forkhead-box (FOX) family of transcription factors and is the human homolog of Xenopus forkhead activin signal transducer-1. FOXH1 plays an important role in mediating TGF-beta/activin signals through its interaction with the SMAD2-SMAD4 complex. It

## Target Details

is expressed primarily during early development and localizes in the cytoplasm until it forms a complex with the SMAD proteins at which time it translocates to the nucleus to positively or negatively affect gene expression. Synonyms: FAST2, Forkhead activin signal transducer 1, Forkhead activin signal transducer 2, Forkhead box protein H1

Molecular Weight:	40 kDa
Gene ID:	8928
NCBI Accession:	<a href="#">NP_003914</a>
Pathways:	<a href="#">Intracellular Steroid Hormone Receptor Signaling Pathway</a> , <a href="#">Regulation of Intracellular Steroid Hormone Receptor Signaling</a>

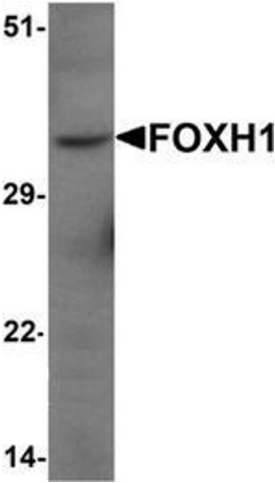
## Application Details

Application Notes:	Optimal working dilution should be determined by the investigator.
Restrictions:	For Research Use only

## Handling

Concentration:	1.0 mg/mL
Handling Advice:	Avoid repeated freezing and thawing.
Storage:	-20 °C
Storage Comment:	Store the antibody (in aliquots) at -20 °C.

## Images



### Western Blotting

**Image 1.** Western blot analysis of FOXH1 in human liver tissue lysate with FOXH1 Antibody at 1 µg/mL