

Datasheet for ABIN1450032
anti-LMX1A antibody (C-Term)



[Go to Product page](#)

1 Image

Overview

Quantity:	0.1 mg
Target:	LMX1A
Binding Specificity:	C-Term
Reactivity:	Human, Mouse, Rat
Host:	Rabbit
Clonality:	Polyclonal
Conjugate:	This LMX1A antibody is un-conjugated
Application:	Western Blotting (WB), Immunofluorescence (IF), Enzyme Immunoassay (EIA)

Product Details

Immunogen:	A 16 amino acid peptide near the carboxy terminus of Human LMX1A
Isotype:	IgG
Purification:	Affinity chromatography purified via peptide column

Target Details

Target:	LMX1A
Alternative Name:	LMX1A (LMX1A Products)
Background:	<p>The LIM homeobox transcription factor 1 (LMX1A) belongs to the LIM-homeodomain family. Members of this family are known to be important for pattern formation during development. LMX1A binds an A/T-rich sequence and functions in the nucleus as a transcriptional activator to the insulin gene promoter. In the developing embryo, LMX1A is expressed along the neuraxis</p>

Target Details

and leads to the development of the roof plate of the vertebrae. While LMX1A is crucial for the differentiation of dopamine neurons, the related LMX1B appears to be important for both the development and the survival of these cells. It has been suggested that LMX1A might be a useful biomarker or risk factor in tumor aggressiveness. Synonyms: LIM homeobox transcription factor 1-alpha, LIM/homeobox protein 1.1, LIM/homeobox protein LMX1A, LMX-1.1, LMX1A

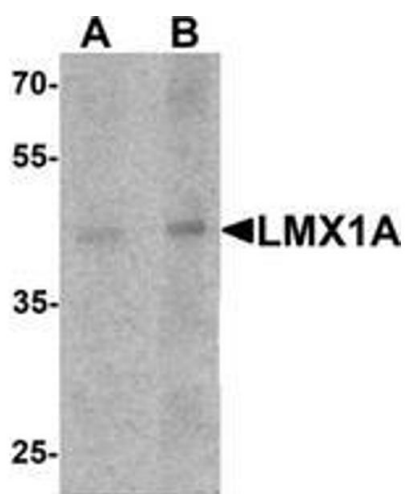
Molecular Weight:	42 kDa
Gene ID:	4009
NCBI Accession:	NP_796372
Pathways:	Dopaminergic Neurogenesis

Application Details

Application Notes:	Optimal working dilution should be determined by the investigator.
Restrictions:	For Research Use only

Handling

Concentration:	1.0 mg/mL
Buffer:	PBS containing 0.02 % Sodium Azide as preservative
Preservative:	Sodium azide
Precaution of Use:	This product contains sodium azide: a POISONOUS AND HAZARDOUS SUBSTANCE which should be handled by trained staff only.
Handling Advice:	Avoid repeated freezing and thawing.
Storage:	4 °C/-20 °C
Storage Comment:	Store undiluted at 2-8 °C for one month or (in aliquots) at -20 °C for longer.



Western Blotting

Image 1. Western blot analysis of LMX1A in rat brain tissue lysate with LMX1A Antibody at (A) 1 and (B) 2 μ g/ml.