

Datasheet for ABIN1450034
anti-MYT1L antibody (C-Term)[Go to Product page](#)

1 Image

Overview

Quantity:	0.1 mg
Target:	MYT1L
Binding Specificity:	C-Term
Reactivity:	Human, Mouse, Rat
Host:	Rabbit
Clonality:	Polyclonal
Conjugate:	This MYT1L antibody is un-conjugated
Application:	Western Blotting (WB), Immunofluorescence (IF), Enzyme Immunoassay (EIA)

Product Details

Immunogen:	Rabbit polyclonal MYT1L antibody was raised against an 18 amino acid peptide near the carboxy terminus of human MYT1L.
Isotype:	IgG
Purification:	Affinity chromatography purified via peptide column

Target Details

Target:	MYT1L
Alternative Name:	MYT1L (MYT1L Products)
Background:	The myelin transcription factor 1 family, to which the myelin transcription factor 1-like protein (MYT1L) belongs, is expressed primarily in the developing central nervous system and recruits histone deacetylase (HDAC) to regulate neural transcription. Both MYT1L and the related

Target Details

protein MYT1 interact with SIN3B, a protein that mediates transcriptional repression by binding to HDACs, suggesting that the MYT1 family favor the silencing of genes during neural development. Recent studies suggest that polymorphisms of MYT1L may be associated with schizophrenia. Synonyms: KIAA1106, MYT1L, Myelin transcription factor 1-like protein

Molecular Weight: 130 kDa

Gene ID: 23040

NCBI Accession: [NP_055840](#)

Application Details

Application Notes: Optimal working dilution should be determined by the investigator.

Restrictions: For Research Use only

Handling

Concentration: 1.0 mg/mL

Buffer: PBS containing 0.02 % Sodium Azide as preservative

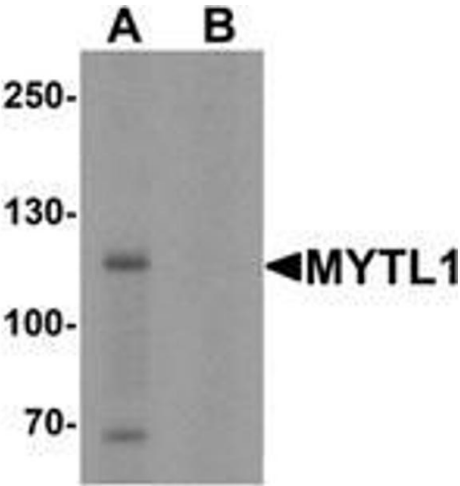
Preservative: Sodium azide

Precaution of Use: This product contains sodium azide: a POISONOUS AND HAZARDOUS SUBSTANCE which should be handled by trained staff only.

Handling Advice: Avoid repeated freezing and thawing.

Storage: -20 °C

Storage Comment: Store the antibody (in aliquots) at -20 °C.



Western Blotting

Image 1. Western blot analysis of MYT1L in mouse brain tissue lysate with MYT1L Antibody at 1 µg/mL in (A) the absence and (B) the presence of blocking peptide.