

Datasheet for ABIN1450035

anti-ACSL1 antibody (Middle Region)[Go to Product page](#)**1** Image

Overview

| | |
|----------------------|---|
| Quantity: | 0.1 mg |
| Target: | ACSL1 (Acs1) |
| Binding Specificity: | Middle Region |
| Reactivity: | Human, Mouse, Rat |
| Host: | Rabbit |
| Clonality: | Polyclonal |
| Conjugate: | This ACSL1 antibody is un-conjugated |
| Application: | Western Blotting (WB), Enzyme Immunoassay (EIA) |

Product Details

| | |
|---------------|--|
| Immunogen: | Rabbit polyclonal ACSL1 antibody was raised against an 18 amino acid peptide near the center of human ACSL1. |
| Isotype: | IgG |
| Purification: | Affinity chromatography purified via peptide column |

Target Details

| | |
|-------------------|---|
| Target: | ACSL1 (Acs1) |
| Alternative Name: | ACSL1 (Acs1 Products) |
| Background: | Long-chain acyl coenzyme A synthetase 1 (ACSL1) catalyzes the synthesis of acyl-CoA from long-chain fatty acids in an ATP-dependent manner. ACSL1 is a member of a family of long-chain acyl-CoA synthetases which differ in substrate preference, tissue expression, and |

Target Details

subcellular localization. In mouse, ASCL1 is the major acyl-CoA enzyme in the heart, providing 60-90 % of heart ATP. Loss of ASCL1 either globally or in heart ventricles resulted in impaired fatty acid oxidation, activation of the mammalian target of rapamycin (mTOR), and cardiac hypertrophy. Synonyms: Acyl-CoA synthetase 1, FACL1, FACL2, LACS, LACS1, LACS2, Long-chain acyl-CoA synthetase 1, Long-chain acyl-CoA synthetase 2, Long-chain fatty acid-CoA ligase 2, Long-chain-fatty-acid-CoA ligase 1, Palmitoyl-CoA ligase 1, Palmitoyl-CoA ligase 2

Molecular Weight: 77 kDa

Gene ID: 2180

NCBI Accession: [NP_001986](#)

Pathways: [Regulation of Lipid Metabolism by PPARalpha](#)

Application Details

Application Notes: Optimal working dilution should be determined by the investigator.

Restrictions: For Research Use only

Handling

Concentration: 1.0 mg/mL

Buffer: PBS containing 0.02 % sodium azide.

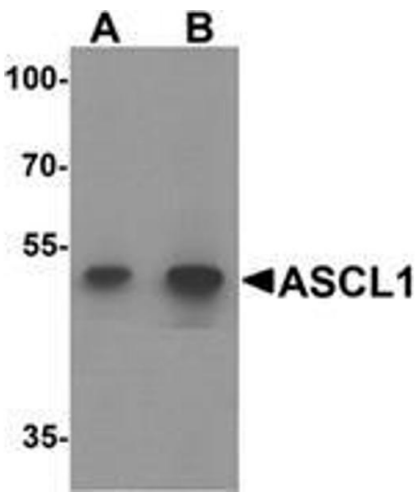
Preservative: Sodium azide

Precaution of Use: This product contains sodium azide: a POISONOUS AND HAZARDOUS SUBSTANCE which should be handled by trained staff only.

Handling Advice: Avoid repeated freezing and thawing.

Storage: -20 °C

Storage Comment: Store the antibody (in aliquots) at -20 °C.



Western Blotting

Image 1. Western blot analysis of ACSL1 in human lung tissue lysate with ACSL1 Antibody at (A) 1 and (B) 2 µg/ml.