



[Go to Product page](#)

Datasheet for ABIN1450039  
**anti-GHDC antibody (N-Term)**

1 Image

Overview

Quantity:	0.1 mg
Target:	GHDC
Binding Specificity:	N-Term
Reactivity:	Human, Mouse, Rat
Host:	Rabbit
Clonality:	Polyclonal
Conjugate:	This GHDC antibody is un-conjugated
Application:	Western Blotting (WB), Immunofluorescence (IF), Enzyme Immunoassay (EIA)

Product Details

Immunogen:	Rabbit polyclonal GHDC antibody was raised against a 19 amino acid peptide near the amino terminus of human GHDC.
Isotype:	IgG
Purification:	Affinity chromatography purified via peptide column

Target Details

Target:	GHDC
Alternative Name:	GHDC ( <a href="#">GHDC Products</a> )
Background:	GHDC, also known as LGP1, is a GH3 domain-containing protein that is highly expressed in normal mammary tissues and mammary tumors. GHDC is primarily located in the nuclear envelope. In mouse, its gene is located on chromosome 11 adjacent to the STAT3/5 locus.

## Target Details

Little is known of the function of this protein. Synonyms: D11LGP1E, GH3 domain-containing protein, GHDC, LGP1

Molecular Weight: 58 kDa

Gene ID: 84514

NCBI Accession: [NP\\_115873](#)

## Application Details

Application Notes: Optimal working dilution should be determined by the investigator.

Restrictions: For Research Use only

## Handling

Concentration: 1.0 mg/mL

Buffer: PBS containing 0.02 % Sodium Azide as preservative

Preservative: Sodium azide

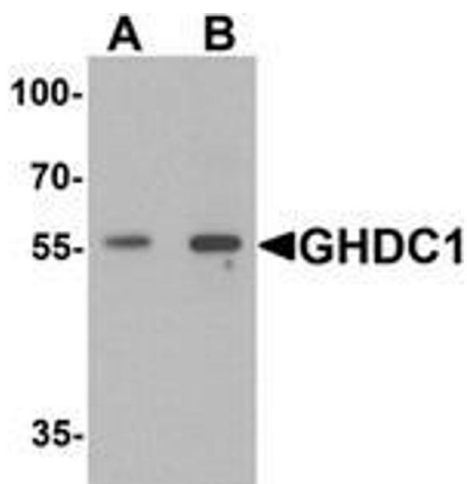
Precaution of Use: This product contains sodium azide: a POISONOUS AND HAZARDOUS SUBSTANCE which should be handled by trained staff only.

Handling Advice: Avoid repeated freezing and thawing.

Storage: -20 °C

Storage Comment: Store the antibody (in aliquots) at -20 °C.

## Images



### Western Blotting

**Image 1.** Western blot analysis of GHDC in 293 cell lysate with GHDC antibody at (A) 0.5 and (B) 1 µg/mL.