

Datasheet for ABIN1450043  
**anti-CHD7 antibody (N-Term)**[Go to Product page](#)

## 2 Images

## Overview

Quantity:	0.1 mg
Target:	CHD7
Binding Specificity:	N-Term
Reactivity:	Human, Mouse
Host:	Rabbit
Clonality:	Polyclonal
Conjugate:	This CHD7 antibody is un-conjugated
Application:	Western Blotting (WB), Immunohistochemistry (Paraffin-embedded Sections) (IHC (p)), Immunofluorescence (IF), Enzyme Immunoassay (EIA)

## Product Details

Immunogen:	CHD7 antibody was raised against an 18 amino acid synthetic peptide near the amino terminus of human CHD7
Isotype:	IgG
Cross-Reactivity (Details):	Species reactivity (tested): Human, Mouse.
Purification:	Affinity chromatography purified via peptide column

## Target Details

Target:	CHD7
Alternative Name:	CHD7 ( <a href="#">CHD7 Products</a> )

## Target Details

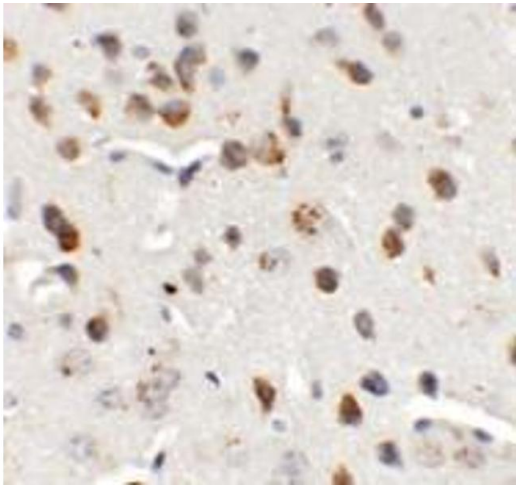
Background:	CHD proteins belong to a superfamily of proteins of ATP-dependent chromatin remodeling enzymes that have a unique combination of functional domains, including two N-terminal chromodomains, a SNF2-like ATPase/helicase domain and a DNA-binding domain. These proteins are thought to play a role in early embryonic development by affecting chromatin structure and gene expression. Mutations in one member of this family, CHD7, result in CHARGE syndrome. It colocalizes with embryonic stem (ES) cell master regulators OCT4/POU5F1, SOX2, and NANOG and is thought to modulate ES-specific gene transcription. Together with SOX2, CHD7 has been suggested to also regulate several human disease genes. Synonyms: ATP-dependent helicase CHD7, CHD-7, Chromodomain-helicase-DNA-binding protein 7, KIAA1416
Gene ID:	55636
UniProt:	<a href="#">Q9P2D1</a>
Pathways:	<a href="#">Sensory Perception of Sound</a> , <a href="#">Chromatin Binding</a>

## Application Details

Application Notes:	Optimal working dilution should be determined by the investigator.
Restrictions:	For Research Use only

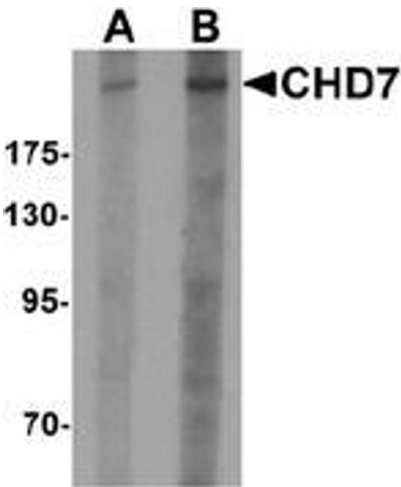
## Handling

Concentration:	1.0 mg/mL
Buffer:	PBS containing 0.02 % Sodium Azide as preservative
Preservative:	Sodium azide
Precaution of Use:	This product contains sodium azide: a POISONOUS AND HAZARDOUS SUBSTANCE which should be handled by trained staff only.
Handling Advice:	Avoid repeated freezing and thawing.
Storage:	4 °C/-20 °C
Storage Comment:	Store undiluted at 2-8 °C for one month or (in aliquots) at -20 °C for longer.



**Immunohistochemistry (Paraffin-embedded Sections)**

**Image 1.** Immunohistochemistry of CHD7 in mouse brain tissue with CHD7 antibody at 5 ug/mL.



**Western Blotting**

**Image 2.** Western blot analysis of CHD7 in SK-N-SH cell lysate with CHD7 antibody at (A) 1 and (B) 2 ug/mL.