

Datasheet for ABIN1450045  
**anti-PAS1C1 antibody (Middle Region)**[Go to Product page](#)

## 2 Images

## Overview

Quantity:	0.1 mg
Target:	PAS1C1 (IFLTD1)
Binding Specificity:	Middle Region
Reactivity:	Human, Mouse, Rat
Host:	Rabbit
Clonality:	Polyclonal
Conjugate:	This PAS1C1 antibody is un-conjugated
Application:	Western Blotting (WB), Immunohistochemistry (Paraffin-embedded Sections) (IHC (p)), Enzyme Immunoassay (EIA)

## Product Details

Immunogen:	19 amino acid synthetic peptide near the center of Human IFLTD1
Isotype:	IgG
Cross-Reactivity (Details):	Species reactivity (tested): Human, Mouse, Rat.
Purification:	Affinity chromatography purified via peptide column

## Target Details

Target:	PAS1C1 (IFLTD1)
Alternative Name:	IFLTD1 ( <a href="#">IFLTD1 Products</a> )
Background:	The intermediate filament tail domain-containing protein (IFLTD1) was initially identified as a

## Target Details

candidate gene for pulmonary adenoma susceptibility 1 gene in mice. Transcripts of the gene were only detected in mouse lung tissue from strains carrying the Pas1-susceptible allele. Expression of different alleles of this gene in lung cancer cell lines resulted in different levels of colony formation in in vitro colony formation assays, suggesting that allelic variants of this gene can modulate growth of human cancer cells. Synonyms: Intermediate filament tail domain-containing protein 1

Gene ID: 160492

NCBI Accession: [NP\\_001139200](#)

## Application Details

Application Notes: Optimal working dilution should be determined by the investigator.

Restrictions: For Research Use only

## Handling

Concentration: 1.0 mg/mL

Buffer: PBS containing 0.02 % Sodium Azide as preservative

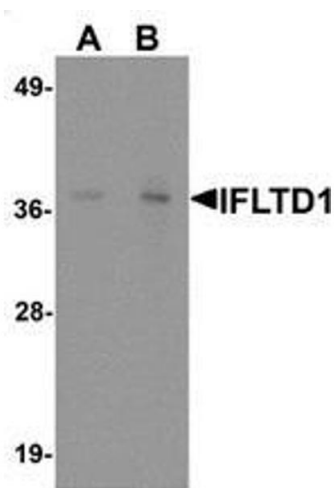
Preservative: Sodium azide

Precaution of Use: This product contains sodium azide: a POISONOUS AND HAZARDOUS SUBSTANCE which should be handled by trained staff only.

Handling Advice: Avoid repeated freezing and thawing.

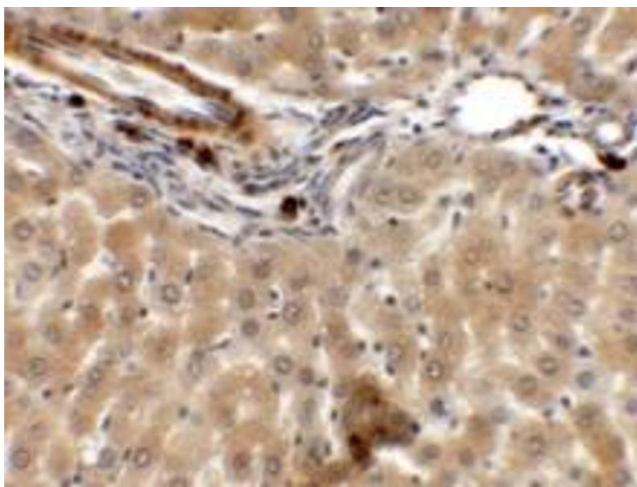
Storage: 4 °C/-20 °C

Storage Comment: Store undiluted at 2-8 °C for one month or (in aliquots) at -20 °C for longer.



Western Blotting

**Image 1.** Western blot analysis of IFLT1D1 in rat liver tissue lysate with IFLT1D1 antibody at (A) 1 and (B) 2 ug/mL.



Immunohistochemistry (Paraffin-embedded Sections)

**Image 2.** Immunohistochemistry of ARHGAP39 in rat liver tissue with ARHGAP39 antibody at 5 ug/mL.