

Datasheet for ABIN1450053  
**anti-SEC62 antibody (C-Term)**[Go to Product page](#)

## 2 Images

## Overview

Quantity:	0.1 mg
Target:	SEC62 (TLOC1)
Binding Specificity:	C-Term
Reactivity:	Human, Mouse, Rat
Host:	Rabbit
Clonality:	Polyclonal
Conjugate:	This SEC62 antibody is un-conjugated
Application:	Western Blotting (WB), Immunohistochemistry (Paraffin-embedded Sections) (IHC (p)), Immunofluorescence (IF), Enzyme Immunoassay (EIA)

## Product Details

Immunogen:	18 amino acid synthetic peptide near the carboxy terminus of Human SEC62
Isotype:	IgG
Cross-Reactivity (Details):	Species reactivity (tested): Human, Mouse, Rat.
Purification:	Affinity chromatography purified via peptide column

## Target Details

Target:	SEC62 (TLOC1)
Alternative Name:	SEC62 / TLOC1 ( <a href="#">TLOC1 Products</a> )
Background:	SEC62 is an integral membrane protein located in the rough endoplasmic reticulum (ER) and is

## Target Details

part of the SEC61-SEC62-SEC63 complex that is the central component of the protein translocation apparatus of the ER membrane. It is speculated that SEC61-SEC62-SEC63 may perform post-translational protein translocation into the ER and might also perform the backward transport of ER proteins that are subject to the ubiquitin-proteasome-dependent degradation pathway. Silencing of this gene with RNAi dramatically reduced the migration and invasive potential of numerous tumor cell lines, suggesting that it may be an attractive target for therapy of various tumors. Synonyms: Translocation protein 1, Translocation protein SEC62

Gene ID: 7095

NCBI Accession: [NP\\_003253](#)

## Application Details

Application Notes: Optimal working dilution should be determined by the investigator.

Restrictions: For Research Use only

## Handling

Concentration: 1.0 mg/mL

Buffer: PBS containing 0.02 % Sodium Azide as preservative

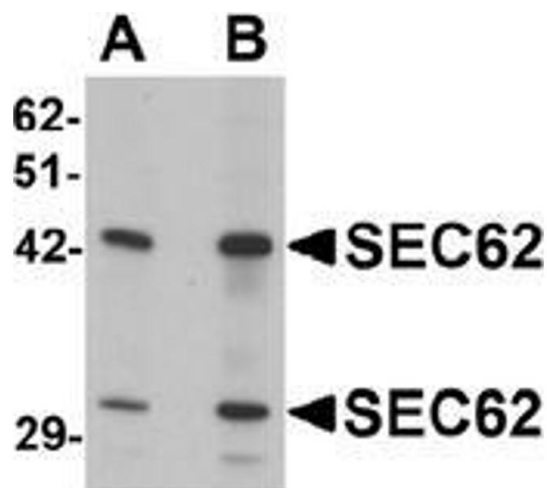
Preservative: Sodium azide

Precaution of Use: This product contains sodium azide: a POISONOUS AND HAZARDOUS SUBSTANCE which should be handled by trained staff only.

Handling Advice: Avoid repeated freezing and thawing.

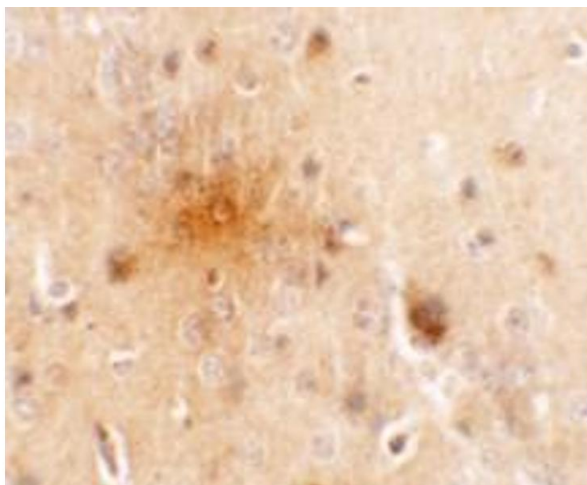
Storage: 4 °C/-20 °C

Storage Comment: Store undiluted at 2-8 °C for one month or (in aliquots) at -20 °C for longer.



**Western Blotting**

**Image 1.** Western blot analysis of SEC62 in rat brain tissue lysate with SEC62 antibody at (A) 0.5 and (B) 1 ug/mL.



**Immunohistochemistry (Paraffin-embedded Sections)**

**Image 2.** Immunohistochemistry of SEC62 in mouse brain tissue with SEC62 antibody at 5 ug/mL.