

Datasheet for ABIN1450059
anti-RILPL1 antibody (N-Term)

2 Images

[Go to Product page](#)

Overview

Quantity:	0.1 mg
Target:	RILPL1
Binding Specificity:	N-Term
Reactivity:	Human, Mouse, Rat
Host:	Rabbit
Clonality:	Polyclonal
Conjugate:	This RILPL1 antibody is un-conjugated
Application:	Western Blotting (WB), Immunofluorescence (IF), Enzyme Immunoassay (EIA)

Product Details

Immunogen:	17 amino acid synthetic peptide near the amino terminus of Human RILPL1
Isotype:	IgG
Cross-Reactivity (Details):	Species reactivity (tested): Human, Mouse, Rat.
Purification:	Affinity chromatography purified via peptide column

Target Details

Target:	RILPL1
Alternative Name:	RILPL1 (RILPL1 Products)
Background:	While the function of the Rab interacting lysosomal protein-like 1 (RILPL1) remains unknown, the homologous protein RILP is a small GTPase that controls transport to endocytic

Target Details

compartments, suggesting RILPL1 may have similar functions. However, overexpression of RILP caused enlarged lysosomes that are more centrally located in the cell, while overexpression of RILPL1 had no visible effect on the location or morphology of lysosomes. Synonyms: RILP-like protein 1, Rab-interacting lysosomal-like protein 1

Gene ID: 353116

Application Details

Application Notes: Optimal working dilution should be determined by the investigator.

Restrictions: For Research Use only

Handling

Concentration: 1.0 mg/mL

Buffer: PBS containing 0.02 % Sodium Azide as preservative

Preservative: Sodium azide

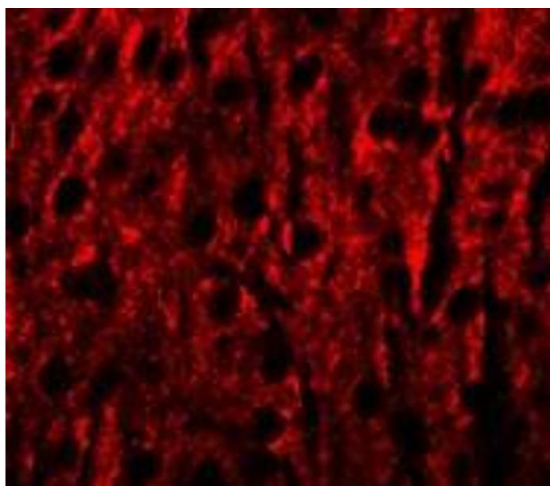
Precaution of Use: This product contains sodium azide: a POISONOUS AND HAZARDOUS SUBSTANCE which should be handled by trained staff only.

Handling Advice: Avoid repeated freezing and thawing.

Storage: 4 °C/-20 °C

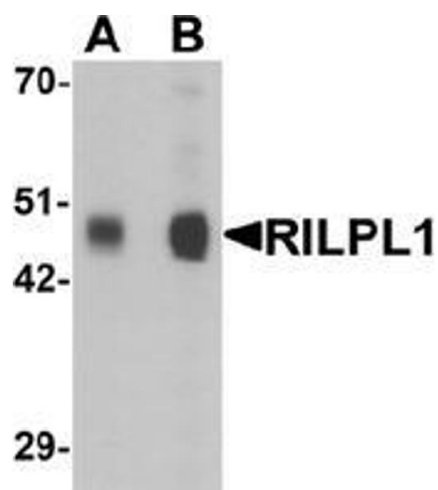
Storage Comment: Store undiluted at 2-8 °C for one month or (in aliquots) at -20 °C for longer.

Images



Immunofluorescence

Image 1. Immunofluorescence of RILPL1 in mouse brain cells with RILPL1 antibody at 20 ug/mL.



Western Blotting

Image 2. Western blot analysis of RILPL1 in rat cerebellum tissue lysate with RILPL1 Antibody at (A) 0.5 and (B) 1 ug/mL.