

Datasheet for ABIN1450061  
**anti-DRGX antibody (C-Term)**[Go to Product page](#)

## 2 Images

## Overview

Quantity:	0.1 mg
Target:	DRGX
Binding Specificity:	C-Term
Reactivity:	Human, Mouse, Rat
Host:	Chicken
Clonality:	Polyclonal
Conjugate:	This DRGX antibody is un-conjugated
Application:	Western Blotting (WB), Immunofluorescence (IF), Enzyme Immunoassay (EIA)

## Product Details

Immunogen:	19 amino acid synthetic peptide near the carboxy terminus of Human DRGX
Cross-Reactivity (Details):	Species reactivity (tested): Human, Mouse, Rat.
Purification:	Affinity chromatography purified via peptide column

## Target Details

Target:	DRGX
Alternative Name:	DRGX / PRRXL1 ( <a href="#">DRGX Products</a> )
Background:	DRGX, also known as DRG11 or PRRXL1, is a paired homeodomain transcription factor, and was initially cloned from a differential hybridization screen aimed at identifying dorsal root ganglia (DRG)-specific genes. DRGX is a key regulator of the differentiation of the spinal cord neuronal circuit dedicated to the processing of nociceptive information. DRGX is also important

## Target Details

for the formation of the whisker-related somatosensory maps in the principal sensory nucleus of the trigeminal nerve, thalamus and somatosensory cortex.Synonyms: Dorsal root ganglia homeobox protein, Paired-related homeobox protein-like 1

Gene ID: 644168

NCBI Accession: [NP\\_001073989](#)

## Application Details

Application Notes: Optimal working dilution should be determined by the investigator.

Restrictions: For Research Use only

## Handling

Concentration: 1.0 mg/mL

Buffer: PBS containing 0.02 % Sodium Azide as preservative

Preservative: Sodium azide

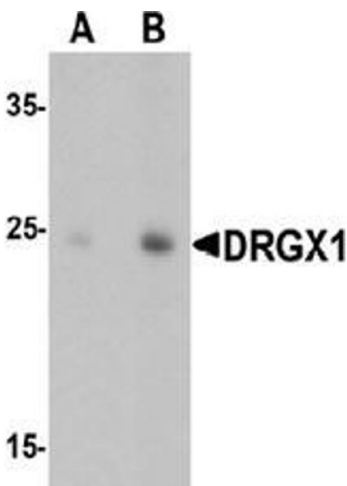
Precaution of Use: This product contains sodium azide: a POISONOUS AND HAZARDOUS SUBSTANCE which should be handled by trained staff only.

Handling Advice: Avoid repeated freezing and thawing.

Storage: 4 °C/-20 °C

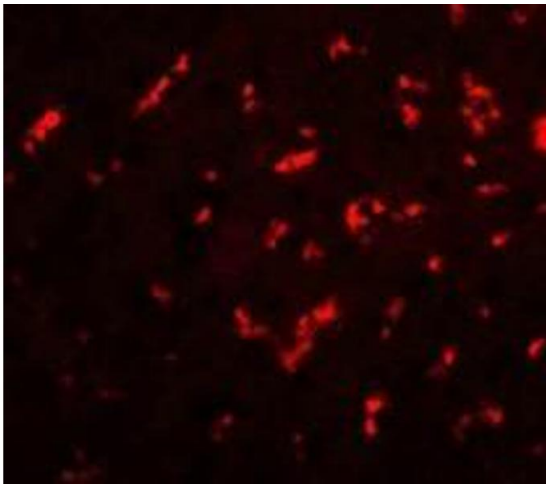
Storage Comment: Store undiluted at 2-8 °C for one month or (in aliquots) at -20 °C for longer.

## Images



### Western Blotting

**Image 1.** Western blot analysis of DRGX in rat liver tissue lysate with DRGX Antibody at (A) 1 and (B) 2 ug/mL.



#### Immunofluorescence

**Image 2.** Immunofluorescence of DRGX in rat liver cells with DRGX antibody at 20 ug/mL.