

Datasheet for ABIN1450062
anti-NSRP1 antibody (C-Term)[Go to Product page](#)

2 Images

Overview

Quantity:	0.1 mg
Target:	NSRP1
Binding Specificity:	C-Term
Reactivity:	Human, Mouse, Rat
Host:	Chicken
Clonality:	Polyclonal
Conjugate:	This NSRP1 antibody is un-conjugated
Application:	Western Blotting (WB), Immunofluorescence (IF), Enzyme Immunoassay (EIA)

Product Details

Immunogen:	16 amino acid synthetic peptide near the carboxy terminus of Human CCDC55
Cross-Reactivity (Details):	Species reactivity (tested): Human, Mouse, Rat.
Purification:	Affinity chromatography purified via peptide column

Target Details

Target:	NSRP1
Alternative Name:	CCDC55 (NSRP1 Products)
Background:	CCDC55, also known as Nuclear speckle-related protein 70 (NSrp70), was initially identified by the NIH Mammalian Gene Collection. Nuclear speckles are known to be the storage sites of mRNA splicing regulators. CCDC55 has been suggested to modulate alternative pre-mRNA splicing in vivo. It co-localizes and physically interacts with the SR proteins SC35 and ASF/SF2,

Target Details

essential splicing factors which are required for constitutive splicing and can regulate alternative mRNA splicing. Loss of CCDC55 in mice leads to early embryonic lethality highlights the importance of the functional role of CCDC55. Synonyms: Coiled-coil domain-containing protein 55, HSPC095, NSrp70

Gene ID: 84081

NCBI Accession: [NP_115517](#)

Application Details

Application Notes: Optimal working dilution should be determined by the investigator.

Restrictions: For Research Use only

Handling

Concentration: 1.0 mg/mL

Buffer: PBS containing 0.02 % Sodium Azide as preservative

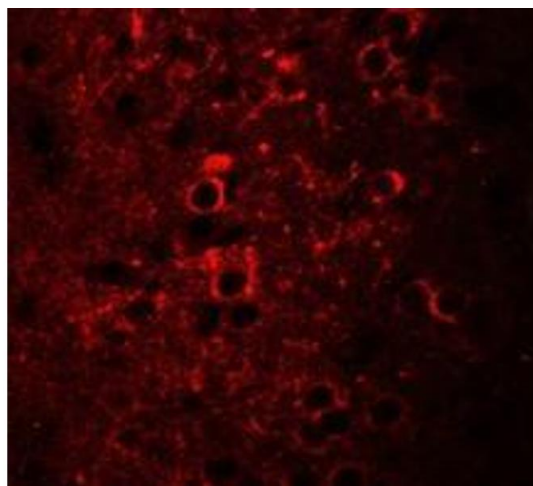
Preservative: Sodium azide

Precaution of Use: This product contains sodium azide: a POISONOUS AND HAZARDOUS SUBSTANCE which should be handled by trained staff only.

Handling Advice: Avoid repeated freezing and thawing.

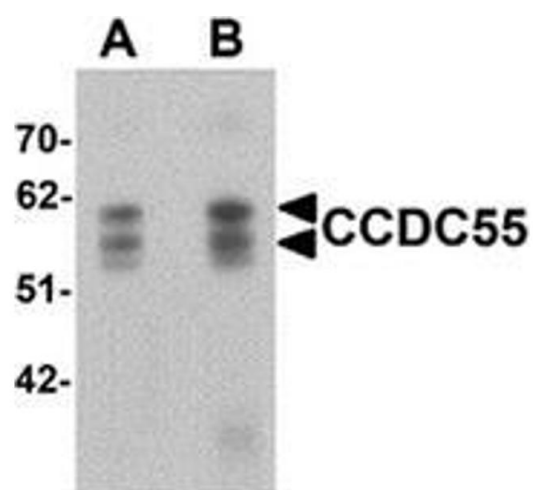
Storage: 4 °C/-20 °C

Storage Comment: Store undiluted at 2-8 °C for one month or (in aliquots) at -20 °C for longer.



Immunofluorescence

Image 1. Immunofluorescence of CCDC55 in mouse brain cells with CCDC55 antibody at 20 ug/mL.



Western Blotting

Image 2. Western blot analysis of CCDC55 in human brain tissue lysate with CCDC55 antibody at (A) 0.5 and (B) 1 μ g/mL