

Datasheet for ABIN1450067

**anti-Solute Carrier Family 35 (UDP-GlcNAc/UDP-Glucose Transporter), Member D2 (SLC35D2) (C-Term) antibody**[Go to Product page](#)**2** Images

## Overview

Quantity:	0.1 mg
Target:	Solute Carrier Family 35 (UDP-GlcNAc/UDP-Glucose Transporter), Member D2 (SLC35D2)
Binding Specificity:	C-Term
Reactivity:	Human
Host:	Rabbit
Clonality:	Polyclonal
Conjugate:	Un-conjugated
Application:	Western Blotting (WB), Immunohistochemistry (Paraffin-embedded Sections) (IHC (p)), Enzyme Immunoassay (EIA), Immunofluorescence (IF)

## Product Details

Immunogen:	14 amino acid synthetic peptide near the carboxy terminus of Human SLC35D2
Isotype:	IgG
Purification:	Affinity chromatography purified via peptide column

## Target Details

Target:	Solute Carrier Family 35 (UDP-GlcNAc/UDP-Glucose Transporter), Member D2 (SLC35D2)
Alternative Name:	SLC35D2 / UGTREL8 ( <a href="#">SLC35D2 Products</a> )
Background:	The solute carrier family SLC35 consists of at least 17 proteins that act as nucleotide sugar transporters localized to the Golgi apparatus and endoplasmic reticulum. The role of the ER-resident SLC family member SLC35D2 is to transport both UDP-glucuronic acid and UDP-N-

## Target Details

acetylgalactosamine. Its overexpression in transfected cells modulated cell surface heparin sulfate expression, suggesting that SLC35D2 is involved in heparin sulfate synthesis. SLC35D2-overexpressing cells also showed increased constitutive and hypotonic stress-stimulated release of UDP-GlcNAc, suggesting that SLC35D2 may be involved in UDP-sugar release and cell signaling. Synonyms: HFRC, HFRC1, Homolog of Fringe connection protein 1, SQV7-like protein, SQV7L, Solute carrier family 35 member D2, UDP-N-acetylglucosamine/UDP-glucose/GDP-mannose transporter, UDP-galactose transporter-related protein 8

Gene ID: 11046

NCBI Accession: [NP\\_008932](#)

## Application Details

Application Notes: Optimal working dilution should be determined by the investigator.

Restrictions: For Research Use only

## Handling

Concentration: 1.0 mg/mL

Buffer: PBS, 0.02 % Sodium Azide

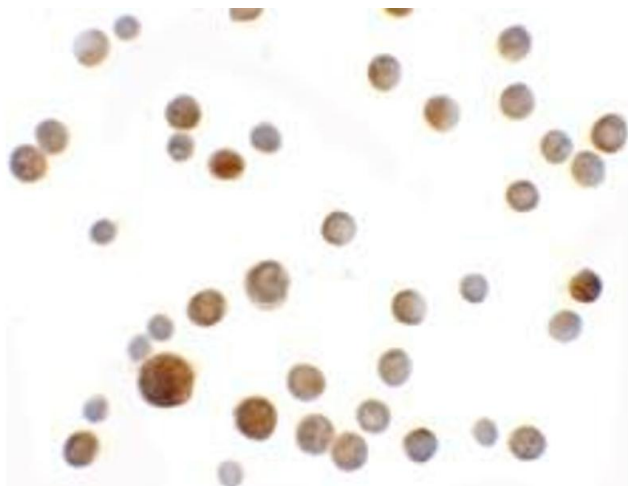
Preservative: Sodium azide

Precaution of Use: This product contains sodium azide: a POISONOUS AND HAZARDOUS SUBSTANCE which should be handled by trained staff only.

Handling Advice: Avoid repeated freezing and thawing.

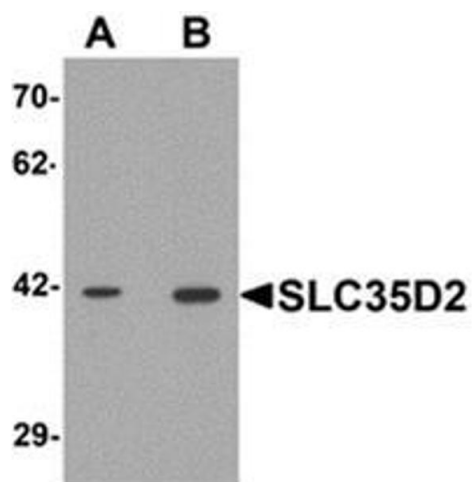
Storage: 4 °C/-20 °C

Storage Comment: Store undiluted at 2-8 °C for one month or (in aliquots) at -20 °C for longer.



#### Immunofluorescence

**Image 1.** Immunocytochemistry of SLC35D2 in HeLa cells with SLC35D2 antibody at 5 ug/ml.



#### Western Blotting

**Image 2.** Western blot analysis of SLC35D2 in HeLa cell lysate with SLC35D2 Antibody at (A) 1 and (B) 2 µg/ml.