

Datasheet for ABIN1450073  
**anti-AFAP1L1 antibody (N-Term)**

## 2 Images

[Go to Product page](#)

## Overview

Quantity:	0.1 mg
Target:	AFAP1L1
Binding Specificity:	N-Term
Reactivity:	Mouse, Human
Host:	Rabbit
Clonality:	Polyclonal
Conjugate:	This AFAP1L1 antibody is un-conjugated
Application:	Western Blotting (WB), Immunofluorescence (IF), Enzyme Immunoassay (EIA)

## Product Details

Immunogen:	19 amino acid synthetic peptide near the amino terminus of Human AFAP1L1
Isotype:	IgG
Purification:	Affinity chromatography purified via peptide column

## Target Details

Target:	AFAP1L1
Abstract:	<a href="#">AFAP1L1 Products</a>
Background:	The actin filament-associated protein 1 (AFAP1)-like 1 protein is one of three members in the AFAP1 family of adaptor proteins. Like AFAP1, AFAP1L1 is an actin binding protein that has a role in actin cytoskeleton arrangement, but AFAP1L1 is thought to have a unique function distinct from AFAP1. AFAP1L1 colocalizes with cortactin and localizes to invadosomes, highly

## Target Details

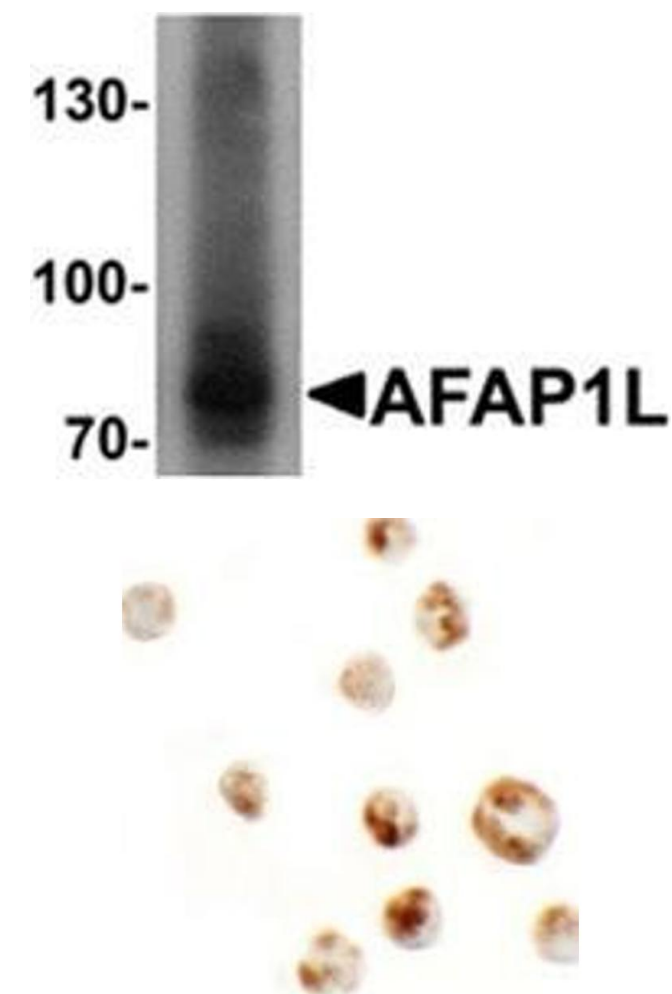
	dynamic, actin-rich adhesion structures harboring metalloproteases, suggesting that AFAP1L1 affects invadosome formation (1, 4). Recent reports suggest that AFAP1L1 can be used as a prognostic marker for spindle cell sarcomas.Synonyms: Actin filament associated protein 1-like 1
Gene ID:	134265
NCBI Accession:	<a href="#">NP_689619</a>

## Application Details

Application Notes:	Optimal working dilution should be determined by the investigator.
Restrictions:	For Research Use only

## Handling

Concentration:	1.0 mg/mL
Buffer:	PBS containing 0.02 % Sodium Azide as preservative
Preservative:	Sodium azide
Precaution of Use:	This product contains sodium azide: a POISONOUS AND HAZARDOUS SUBSTANCE which should be handled by trained staff only.
Handling Advice:	Avoid repeated freezing and thawing.
Storage:	4 °C/-20 °C
Storage Comment:	Store undiluted at 2-8 °C for one month or (in aliquots) at -20 °C for longer.



#### Western Blotting

**Image 1.** Western blot analysis of AFAP1L1 in A549 cell lysate with AFAP1L1 Cat.-No AP55572PU-N antibody at 1 ug/ml.

#### Immunofluorescence

**Image 2.** Immunocytochemistry of AFAP1L in A549 cells with AFAP1L Antibody at 5 µg/ml.