

Datasheet for ABIN1450074
anti-PRICKLE1 antibody (C-Term)[Go to Product page](#)

2 Images

Overview

Quantity:	0.1 mg
Target:	PRICKLE1
Binding Specificity:	C-Term
Reactivity:	Human, Rat, Mouse
Host:	Rabbit
Clonality:	Polyclonal
Conjugate:	This PRICKLE1 antibody is un-conjugated
Application:	Western Blotting (WB), Immunofluorescence (IF), Enzyme Immunoassay (EIA)

Product Details

Immunogen:	19 amino acid synthetic peptide near the carboxy terminus of human PRICKLE1
Isotype:	IgG
Cross-Reactivity (Details):	Species reactivity (tested): Human, Mouse, Rat.
Purification:	Affinity chromatography purified via peptide column

Target Details

Target:	PRICKLE1
Alternative Name:	PRICKLE1 (PRICKLE1 Products)
Background:	PRICKLE1, also known as RILP or EPM1B, is a Disheveled-associated protein that serves as a nuclear translocation receptor for REST/NRSF and REST4 (1, 2). It contains three N-terminal

Target Details

LIM domains and three C-terminal nuclear localization signals. It localizes to the cytoplasm, as well as to the nuclear membrane and expressed at higher levels in placenta. PRICKLE1 is a negative regulator of the Wnt / beta-catenin signaling pathway and is a putative tumor suppressor in human HCCs. Defects in the gene encoding PRICKLE1 are associated with autosomal recessive progressive myoclonic epilepsy. Synonyms: PRICKLE-1, Prickle-like protein 1, REST/NRSF-interacting LIM domain protein 1, RILP

Gene ID: 144165

NCBI Accession: [NP_694571](#)

Pathways: [WNT Signaling](#), [Regulation of Muscle Cell Differentiation](#), [Tube Formation](#), [Skeletal Muscle Fiber Development](#), [Protein targeting to Nucleus](#)

Application Details

Application Notes: Optimal working dilution should be determined by the investigator.

Restrictions: For Research Use only

Handling

Concentration: 1.0 mg/mL

Buffer: PBS containing 0.02 % Sodium Azide as preservative

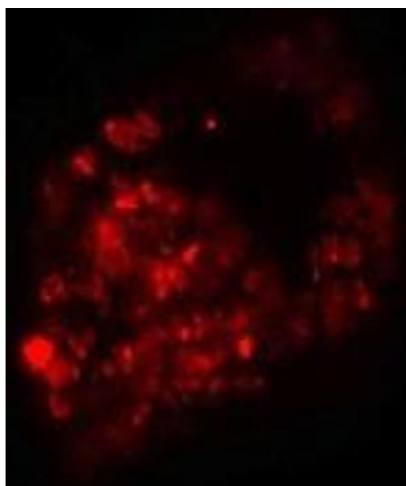
Preservative: Sodium azide

Precaution of Use: This product contains sodium azide: a POISONOUS AND HAZARDOUS SUBSTANCE which should be handled by trained staff only.

Handling Advice: Avoid repeated freezing and thawing.

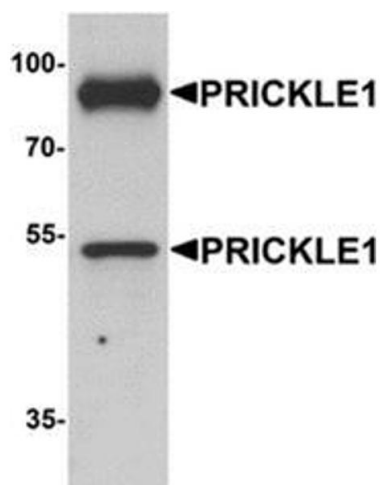
Storage: 4 °C/-20 °C

Storage Comment: Store undiluted at 2-8 °C for one month or (in aliquots) at -20 °C for longer.



Immunofluorescence

Image 1. Immunofluorescence of PRICKLE1 in human bladder cells with PRICKLE1 antibody at 20 ug/mL.



Western Blotting

Image 2. Western blot analysis of PRICKLE1 in human bladder tissue lysate with PRICKLE1 antibody at 1 ug/mL.