

Datasheet for ABIN1450075
anti-PRICKLE2 antibody (Middle Region)[Go to Product page](#)

2 Images

Overview

| | |
|----------------------|--|
| Quantity: | 0.1 mg |
| Target: | PRICKLE2 |
| Binding Specificity: | Middle Region |
| Reactivity: | Human, Mouse, Rat |
| Host: | Rabbit |
| Clonality: | Polyclonal |
| Conjugate: | This PRICKLE2 antibody is un-conjugated |
| Application: | Western Blotting (WB), Immunofluorescence (IF), Enzyme Immunoassay (EIA) |

Product Details

| | |
|-----------------------------|---|
| Immunogen: | 15 amino acid synthetic peptide near the center of human PRICKLE2 |
| Isotype: | IgG |
| Cross-Reactivity (Details): | Species reactivity (tested): Human, Mouse, Rat. |
| Purification: | Affinity chromatography purified via peptide column |

Target Details

| | |
|-------------------|---|
| Target: | PRICKLE2 |
| Alternative Name: | PRICKLE2 (PRICKLE2 Products) |
| Background: | PRICKLE2, also known as Pk2 or EPM5, is a member of a highly conserved protein family that function in the noncanonical WNT signaling pathway which regulates intracellular calcium |

Target Details

release and planar cell polarity. Both PRICKLE2 and the related protein PRICKLE1 are expressed in postmitotic neurons and promote neurite outgrowth, and both proteins promote neurite outgrowth via the Dishevelled dependent pathway in C1300 cells. PRICKLE2 localizes to the postsynaptic density and interacts with PSD-95 and NMDA receptors. Defects in the gene encoding PRICKLE2 are associated with autosomal recessive progressive myoclonic epilepsy. Synonyms: PRICKLE-2, Prickle-like protein 2

Gene ID: 166336

NCBI Accession: [NP_942559](#)

Application Details

Application Notes: Optimal working dilution should be determined by the investigator.

Restrictions: For Research Use only

Handling

Concentration: 1.0 mg/mL

Buffer: PBS containing 0.02 % Sodium Azide as preservative

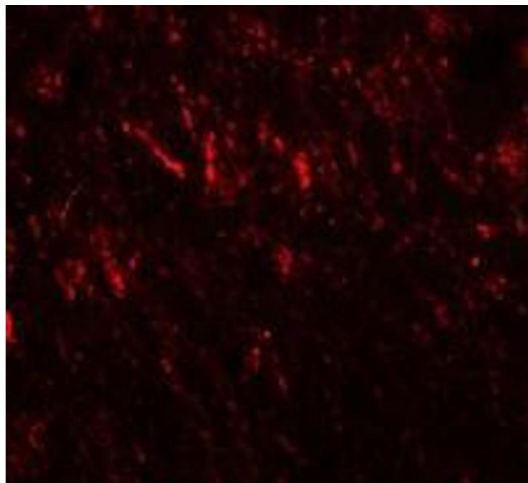
Preservative: Sodium azide

Precaution of Use: This product contains sodium azide: a POISONOUS AND HAZARDOUS SUBSTANCE which should be handled by trained staff only.

Handling Advice: Avoid repeated freezing and thawing.

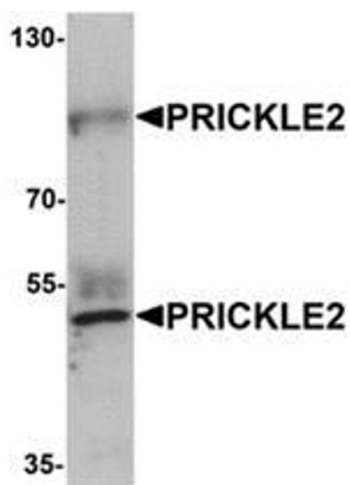
Storage: 4 °C/-20 °C

Storage Comment: Store undiluted at 2-8 °C for one month or (in aliquots) at -20 °C for longer.



Immunofluorescence

Image 1. Immunofluorescence of PRICKLE2 in rat brain cells with PRICKLE2 antibody at 20 ug/mL.



Western Blotting

Image 2. Western blot analysis of PRICKLE2 in A-20 lysate with PRICKLE2 antibody at 1 µg/mL.