



[Go to Product page](#)

Datasheet for ABIN1450078

## anti-MS4A6A antibody (N-Term)

### 2 Images

#### Overview

Quantity:	0.1 mg
Target:	MS4A6A
Binding Specificity:	N-Term
Reactivity:	Human, Rat, Mouse
Host:	Rabbit
Clonality:	Polyclonal
Conjugate:	This MS4A6A antibody is un-conjugated
Application:	Western Blotting (WB), Immunofluorescence (IF), Immunohistochemistry (Paraffin-embedded Sections) (IHC (p)), Enzyme Immunoassay (EIA)

#### Product Details

Immunogen:	19 amino acid synthetic peptide near the amino terminus of Human MS4A6A
Isotype:	IgG
Cross-Reactivity (Details):	Species reactivity (tested):Human, Mouse, Rat
Purification:	Affinity chromatography purified via peptide column

#### Target Details

Target:	MS4A6A
Alternative Name:	MS4A6A ( <a href="#">MS4A6A Products</a> )
Background:	The MS4A gene family in humans includes CD20 (MS4A1), FcRbeta (MS4A2), Htm4 (MS4A3),

## Target Details

---

and at least 13 other genes encoding membrane proteins, most having characteristic tetraspanning topology and similar intron/exon splice boundaries. All family members display unique expression patterns among hematopoietic cells and non-lymphoid tissues. The function of MS4A6A has been suggested to be involved in signal transduction as a component of a multimeric receptor complex in Alzheimer's disease and cancer. Synonyms: 4SPAN3, CD20 antigen-like 3, CD20L3, CDA01, Four-span transmembrane protein 3, MS4A6, Membrane-spanning 4-domains subfamily A member 6A

---

Gene ID: 64231

---

NCBI Accession: [NP\\_071744](#)

## Application Details

---

Application Notes: Optimal working dilution should be determined by the investigator.

---

Restrictions: For Research Use only

## Handling

---

Concentration: 1.0 mg/mL

---

Buffer: PBS containing 0.02 % Sodium Azide as preservative

---

Preservative: Sodium azide

---

Precaution of Use: This product contains sodium azide: a POISONOUS AND HAZARDOUS SUBSTANCE which should be handled by trained staff only.

---

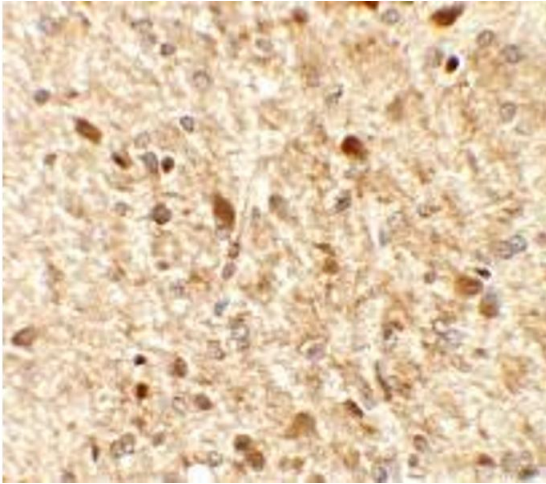
Handling Advice: Avoid repeated freezing and thawing.

---

Storage: 4 °C/-20 °C

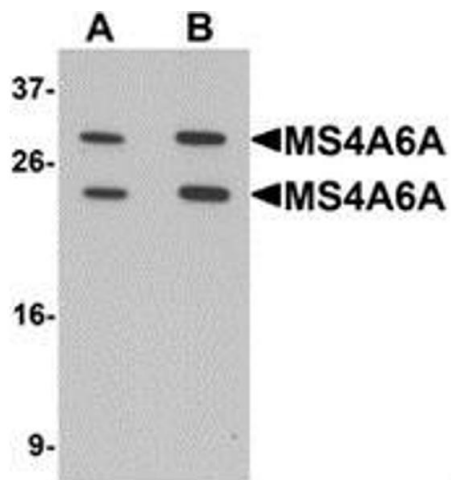
---

Storage Comment: Store undiluted at 2-8 °C for one month or (in aliquots) at -20 °C for longer.



#### Immunohistochemistry (Paraffin-embedded Sections)

**Image 1.** Immunohistochemistry of MS4A6A in rat brain tissue with MS4A6A antibody at 2.5 ug/mL.



#### Western Blotting

**Image 2.** Western blot analysis of MS4A6A in 293 cell lysate with MS4A6A Antibody at (A) 1 and (B) 2 ug/mL.