

Datasheet for ABIN1450081  
**anti-ZGPAT antibody (C-Term)**[Go to Product page](#)

## 2 Images

## Overview

Quantity:	0.1 mg
Target:	ZGPAT
Binding Specificity:	C-Term
Reactivity:	Human
Host:	Chicken
Clonality:	Polyclonal
Conjugate:	This ZGPAT antibody is un-conjugated
Application:	Western Blotting (WB), Immunofluorescence (IF), Enzyme Immunoassay (EIA)

## Product Details

Immunogen:	15 amino acid synthetic peptide near the carboxy terminus of human ZGPAT
Cross-Reactivity (Details):	Species reactivity (tested):Human.
Purification:	Affinity chromatography purified via peptide column

## Target Details

Target:	ZGPAT
Alternative Name:	ZGPAT ( <a href="#">ZGPAT Products</a> )
Background:	The Zinc finger CCCH-type with G patch domain-containing protein (ZGPAT), is a transcriptional repressor that regulates several cellular pathways including EGFR pathways that are involved in cell proliferation, migration and survival. ZGPAT recruits the Mi-2/NuRD complex and represses the expression of EGFR. ZGPAT is down-regulated in breast carcinomas and its expression is

## Target Details

negatively correlated with that of EGFR, suggesting that it may be a potential target for breast cancer therapy. Multiple isoforms of ZGPAT are known to exist, including sZIP, which binds to the Mi-2/NuRD complex but lacks the DNA binding component of full-length ZGPAT, thereby antagonizing transcription repression and growth inhibition by ZGPAT. Synonyms: G patch domain-containing protein 6, GPATC6, GPATCH6, KIAA1847, ZC3H9, ZC3HDC9, Zinc finger CCCH domain-containing protein 9, Zinc finger CCCH-type with G patch domain-containing protein

Gene ID: 84619

NCBI Accession: [NP\\_115916](#)

Pathways: [EGFR Signaling Pathway](#)

## Application Details

Application Notes: Optimal working dilution should be determined by the investigator.

Restrictions: For Research Use only

## Handling

Concentration: 1.0 mg/mL

Buffer: PBS containing 0.02 % Sodium Azide as preservative

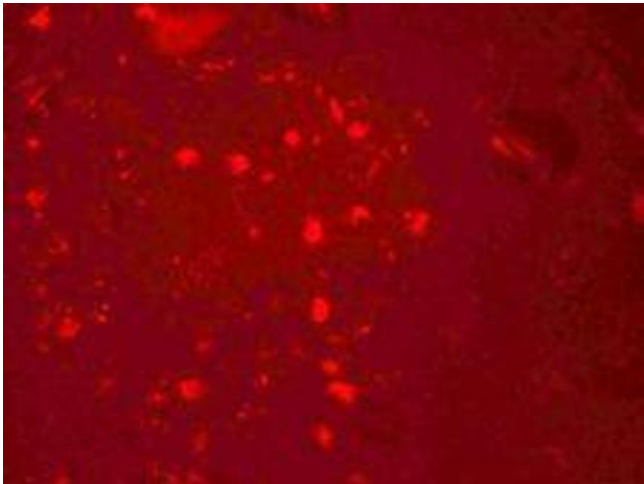
Preservative: Sodium azide

Precaution of Use: This product contains sodium azide: a POISONOUS AND HAZARDOUS SUBSTANCE which should be handled by trained staff only.

Handling Advice: Avoid repeated freezing and thawing.

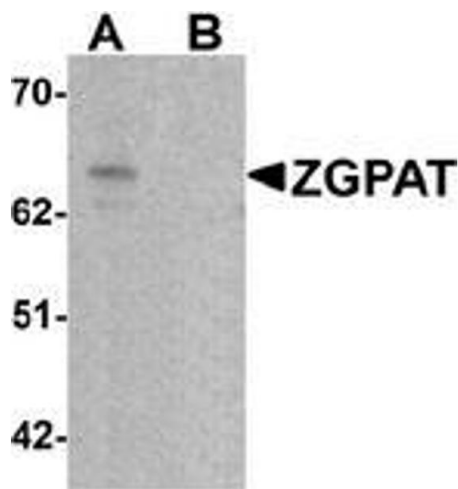
Storage: 4 °C/-20 °C

Storage Comment: Store undiluted at 2-8 °C for one month or (in aliquots) at -20 °C for longer.



Immunofluorescence

**Image 1.** Immunofluorescence of ZGPAT in human brain cells with ZGPAT antibody at 20 ug/mL.



Western Blotting

**Image 2.** Western blot analysis of ZGPAT in SK-N-SH cell lysate with ZGPAT antibody at 1 ug/mL in (A) the absence and (B) the presence of blocking peptide.