

Datasheet for ABIN1450091  
**anti-Strumpellin antibody (C-Term)**[Go to Product page](#)

## 1 Image

## Overview

Quantity:	0.1 mg
Target:	Strumpellin (WASHC5)
Binding Specificity:	C-Term
Reactivity:	Human, Mouse, Rat
Host:	Rabbit
Clonality:	Polyclonal
Conjugate:	This Strumpellin antibody is un-conjugated
Application:	Western Blotting (WB), Enzyme Immunoassay (EIA)

## Product Details

Immunogen:	A 19 amino acid synthetic peptide near the carboxy terminus of Human Strumpellin
Isotype:	IgG
Purification:	Affinity chromatography purified via peptide column

## Target Details

Target:	Strumpellin (WASHC5)
Alternative Name:	Strumpellin ( <a href="#">WASHC5 Products</a> )
Background:	Strumpellin is a ubiquitously expressed, multi-transmembrane and spectrin-repeat-containing protein. It is named for Strumpell disease, a progressive upper-motor neurodegenerative disease termed hereditary spastic paraplegia (HSP). The Strumpellin gene maps to the eighth HSP locus (SPG8) on chromosome 8p24.13. Three families linked to this locus have mutations

## Target Details

in the Strumpellin gene, rescue studies of zebrafish with decreased Strumpellin expression with Strumpellin mRNA containing these mutations showed impaired normal function of this protein. Recent studies suggest that Strumpellin may also be involved in protein aggregation diseases. Synonyms: KIAA0196

Gene ID: 9897

NCBI Accession: [NP\\_055661](#)

## Application Details

Application Notes: Optimal working dilution should be determined by the investigator.

Restrictions: For Research Use only

## Handling

Concentration: 1.0 mg/mL

Buffer: PBS containing 0.02 % Sodium Azide as preservative

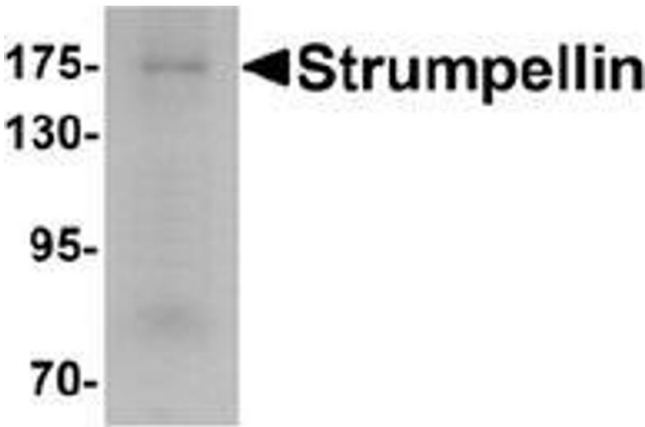
Preservative: Sodium azide

Precaution of Use: This product contains sodium azide: a POISONOUS AND HAZARDOUS SUBSTANCE which should be handled by trained staff only.

Handling Advice: Avoid repeated freezing and thawing.

Storage: 4 °C/-20 °C

Storage Comment: Store undiluted at 2-8 °C for one month or (in aliquots) at -20 °C for longer.



Western Blotting

**Image 1.** Western blot analysis of Strumpellin in human ovary tissue lysate with Strumpellin Antibody at 1 µg/ml.