

Datasheet for ABIN1450101
anti-SPATA18 antibody (N-Term)[Go to Product page](#)

1 Image

Overview

Quantity:	0.1 mg
Target:	SPATA18
Binding Specificity:	N-Term
Reactivity:	Human, Mouse, Rat
Host:	Chicken
Clonality:	Polyclonal
Conjugate:	This SPATA18 antibody is un-conjugated
Application:	Western Blotting (WB), Enzyme Immunoassay (EIA)

Product Details

Immunogen:	SPATA18 antibody was raised against a 19 amino acid synthetic peptide near the amino terminus of human SPATA18.
Purification:	Affinity chromatography purified via peptide column

Target Details

Target:	SPATA18
Alternative Name:	SPATA18 (SPATA18 Products)
Background:	SPATA18, also known as SPETEX-1, was initially identified as a cytoplasmic protein of elongate spermatids that is thought to be involved in differentiation process of elongate spermatids to mature spermatozoa. Recent experiments have shown that SPATA18 is a transcriptional target of p53 and p63. It has also been suggested to play a role in mitochondria quality control by

Target Details

	inducing intramitochondrial lysosome-like organelle that eliminate oxidized mitochondrial proteins.Synonyms: FLJ32906, Spermatogenesis-associated protein 18
Gene ID:	132671
NCBI Accession:	NP_660306

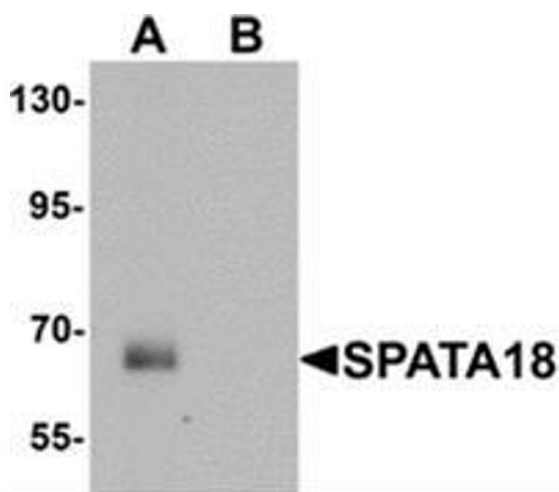
Application Details

Application Notes:	Optimal working dilution should be determined by the investigator.
Restrictions:	For Research Use only

Handling

Concentration:	1.0 mg/mL
Buffer:	PBS containing 0.02 % sodium azide.
Preservative:	Sodium azide
Precaution of Use:	This product contains sodium azide: a POISONOUS AND HAZARDOUS SUBSTANCE which should be handled by trained staff only.
Handling Advice:	Avoid repeated freezing and thawing.
Storage:	-20 °C
Storage Comment:	Store the antibody (in aliquots) at -20 °C.

Images



Western Blotting

Image 1. Western blot analysis of SPATA18 in rat lung tissue lysate with SPATA18 antibody at 1 ug/mL in (A) the absence and (B) the presence of blocking peptide