

Datasheet for ABIN1450108
anti-MEX3B antibody (Middle Region)[Go to Product page](#)

2 Images

Overview

Quantity:	0.1 mg
Target:	MEX3B
Binding Specificity:	Middle Region
Reactivity:	Human, Mouse, Rat
Host:	Rabbit
Clonality:	Polyclonal
Conjugate:	This MEX3B antibody is un-conjugated
Application:	Western Blotting (WB), Immunofluorescence (IF), Enzyme Immunoassay (EIA)

Product Details

Immunogen:	RKHD3 antibody was raised against a 16 amino acid synthetic peptide from near the center of human RKHD3.
Isotype:	IgG
Cross-Reactivity (Details):	Species reactivity (tested): Human, Mouse, Rat.
Purification:	Affinity chromatography purified via peptide column

Target Details

Target:	MEX3B
Alternative Name:	MEX3B / RKHD3 (MEX3B Products)
Background:	Rkhd3, also known as MEX3B is a member of a novel family of four homologous human MEX3

Target Details

proteins each containing two heterogeneous nuclear ribonucleoprotein K homology (KH) domains and one carboxy-terminal RING finger module. MEX3 proteins, including Rkhd3, are phosphoproteins that bind RNA through their KH domains and shuttle between the nucleus and the cytoplasm via the CRM1 export pathway. These proteins are a novel family of evolutionarily conserved RNA-binding proteins, differentially recruited to P bodies and potentially involved in post-transcriptional regulatory mechanisms. Rkhd3 is thought to act as a mechanism to fine-tune mRNA regulation in early *Xenopus* development, and with Rkhd4, but not Rkhd1, will co-localize with both the hDcp1a decapping factor and Argonaute (Ago) proteins in processing bodies (P bodies), recently characterized as centers of mRNA turnover. Synonyms: KIAA2009, RING finger and KH domain-containing protein 3, RING finger protein 195, RNA-binding protein MEX3B, RNF195

Gene ID: 84206

NCBI Accession: [NP_780575](#)

Application Details

Application Notes: Optimal working dilution should be determined by the investigator.

Restrictions: For Research Use only

Handling

Concentration: 1.0 mg/mL

Buffer: PBS containing 0.02 % Sodium Azide as preservative

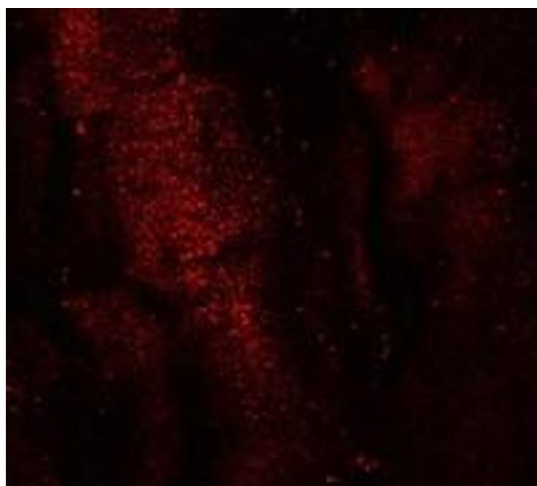
Preservative: Sodium azide

Precaution of Use: This product contains sodium azide: a POISONOUS AND HAZARDOUS SUBSTANCE which should be handled by trained staff only.

Handling Advice: Avoid repeated freezing and thawing.

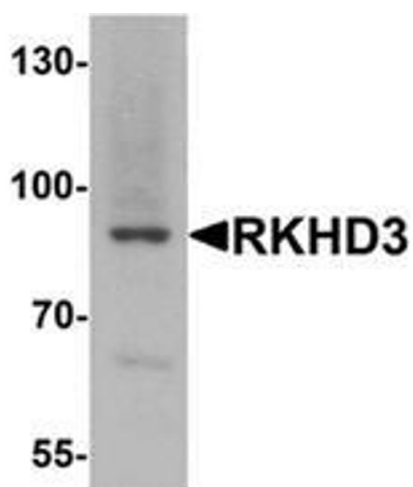
Storage: 4 °C/-20 °C

Storage Comment: Store undiluted at 2-8 °C for one month or (in aliquots) at -20 °C for longer.



Immunofluorescence

Image 1. Immunofluorescence of RKHD3 in mouse skeletal muscle cells with RKHD3 antibody at 20 ug/mL.



Western Blotting

Image 2. Western blot analysis of RKHD3 in mouse skeletal muscle tissue lysate with RKHD3 antibody at 1 ug/mL.