

Datasheet for ABIN1450109
anti-SIPA1 antibody (N-Term)[Go to Product page](#)

2 Images

Overview

Quantity:	0.1 mg
Target:	SIPA1
Binding Specificity:	N-Term
Reactivity:	Human
Host:	Rabbit
Clonality:	Polyclonal
Conjugate:	This SIPA1 antibody is un-conjugated
Application:	Western Blotting (WB), Immunofluorescence (IF), Enzyme Immunoassay (EIA)

Product Details

Immunogen:	19 amino acid synthetic peptide from near the amino terminus of human SIPA1
Isotype:	IgG
Cross-Reactivity (Details):	Species reactivity (tested):Human.
Purification:	Affinity chromatography purified via peptide column

Target Details

Target:	SIPA1
Alternative Name:	SIPA1 / SPA1 (SIPA1 Products)
Background:	Signal-induced proliferation 1 (SIPA1) is a member of the SIPA1 family of RapGAPs, a family of mitogen-induced GTPase activating proteins. SIPA1 exhibits a specific GAP activity for Ras-

Target Details

related regulatory proteins Rap1 and Rap2, but not for Ran or other small GTPases. When abnormally or prematurely expressed, SIPA1 may also hamper mitogen-induced cell cycle progression and may increase metastases in human cancers. Synonyms: GTPase-activating protein Spa-1, Signal-induced proliferation-associated protein 1, Sipa-1, Spa-1, p130 SPA-1

Gene ID: 6494

Pathways: [Response to Water Deprivation](#)

Application Details

Application Notes: Optimal working dilution should be determined by the investigator.

Restrictions: For Research Use only

Handling

Concentration: 1.0 mg/mL

Buffer: PBS containing 0.02 % Sodium Azide as preservative

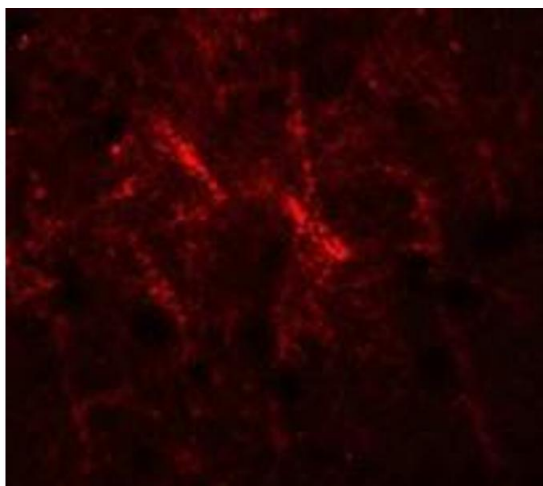
Preservative: Sodium azide

Precaution of Use: This product contains sodium azide: a POISONOUS AND HAZARDOUS SUBSTANCE which should be handled by trained staff only.

Handling Advice: Avoid repeated freezing and thawing.

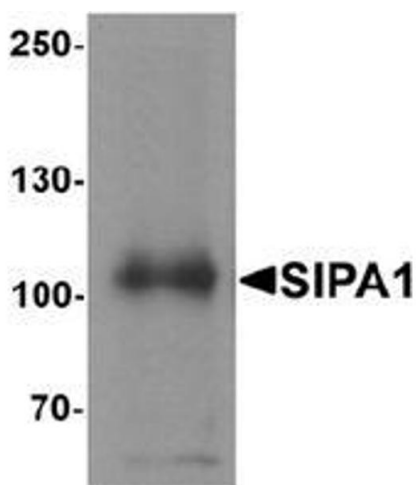
Storage: 4 °C/-20 °C

Storage Comment: Store undiluted at 2-8 °C for one month or (in aliquots) at -20 °C for longer.



Immunofluorescence

Image 1. Immunofluorescence of SIPA1 in human brain cells with SIPA1 antibody at 20 ug/mL.



Western Blotting

Image 2. Western blot analysis of SIPA1 in human brain tissue lysate with SIPA1 antibody at 1 µg/mL.