

Datasheet for ABIN1450110  
**anti-KPNA5 antibody (N-Term)**

## 2 Images

[Go to Product page](#)

## Overview

Quantity:	0.1 mg
Target:	KPNA5
Binding Specificity:	N-Term
Reactivity:	Human, Mouse
Host:	Rabbit
Clonality:	Polyclonal
Conjugate:	This KPNA5 antibody is un-conjugated
Application:	Western Blotting (WB), Immunofluorescence (IF), Enzyme Immunoassay (EIA)

## Product Details

Immunogen:	18 amino acid synthetic peptide near the amino terminus of Human KPNA5
Isotype:	IgG
Cross-Reactivity (Details):	Species reactivity (tested): Human, Mouse.
Purification:	Affinity chromatography purified via peptide column

## Target Details

Target:	KPNA5
Alternative Name:	KPNA5 / Importin alpha-6 ( <a href="#">KPNA5 Products</a> )
Background:	Karyopherin, a cytosolic and heterodimeric protein complex consisting of alpha and beta subunits, is responsible for targeting proteins with nuclear localization signals to the nuclear

## Target Details

pore complex (NPC) by an energy requiring, Ran-dependent mechanism. The alpha subunit and imported substrate enter the nucleus and accumulate in the nucleoplasm, while the beta subunit accumulates at the NPC. KPNA5 belongs to a subfamily within the KPNA family that also includes KPNA4 and 6 and is thought to be involved in NLS-dependent protein import into the nucleus. Synonyms: Karyopherin subunit alpha-5

Gene ID: 3841

Pathways: [Protein targeting to Nucleus](#)

## Application Details

Application Notes: Optimal working dilution should be determined by the investigator.

Restrictions: For Research Use only

## Handling

Concentration: 1.0 mg/mL

Buffer: PBS containing 0.02 % Sodium Azide as preservative

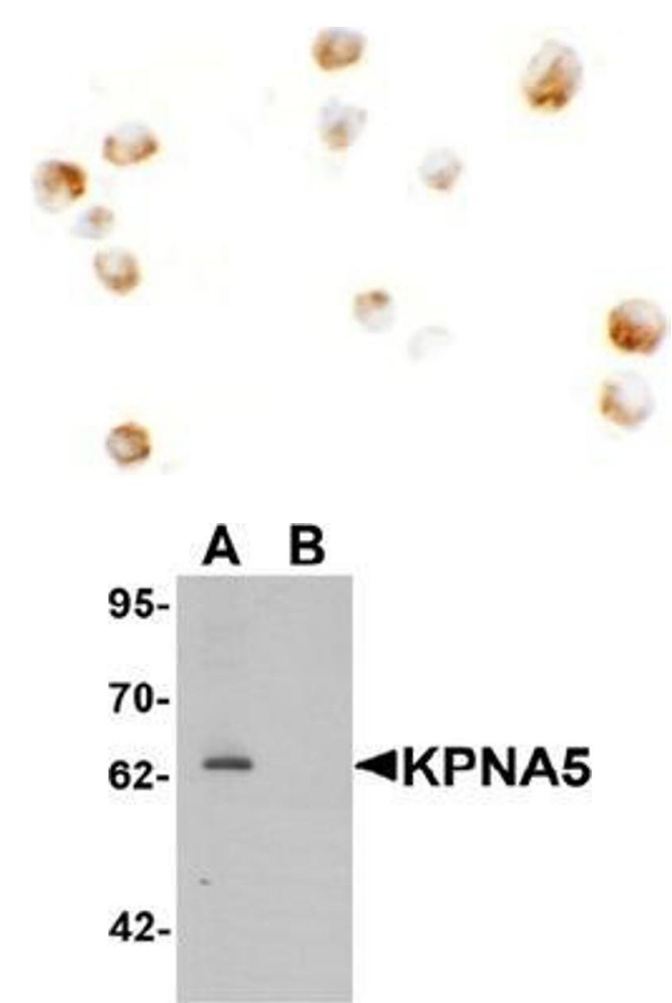
Preservative: Sodium azide

Precaution of Use: This product contains sodium azide: a POISONOUS AND HAZARDOUS SUBSTANCE which should be handled by trained staff only.

Handling Advice: Avoid repeated freezing and thawing.

Storage: 4 °C/-20 °C

Storage Comment: Store undiluted at 2-8 °C for one month or (in aliquots) at -20 °C for longer.



Immunofluorescence

**Image 1.** Immunocytochemistry of KPNA5 in EL4 cells with KPNA5 antibody at 5 ug/mL.

Western Blotting

**Image 2.** Western blot analysis of KPNA6 in EL4 cell lysate with KPNA5 Antibody at 1 µg/mL in (A) the absence and (B) the presence of blocking peptide.