

Datasheet for ABIN1450111
anti-Kdm6b antibody (N-Term)



[Go to Product page](#)

2 Images

Overview

Quantity:	0.1 mg
Target:	Kdm6b
Binding Specificity:	N-Term
Reactivity:	Human, Mouse, Rat
Host:	Rabbit
Clonality:	Polyclonal
Conjugate:	This Kdm6b antibody is un-conjugated
Application:	Western Blotting (WB), Immunofluorescence (IF), Enzyme Immunoassay (EIA)

Product Details

Immunogen:	16 amino acid synthetic peptide from near the amino terminus of Human JMJD3
Isotype:	IgG
Cross-Reactivity (Details):	Species reactivity (tested): Human, Mouse, Rat.
Purification:	Affinity chromatography purified via peptide column

Target Details

Target:	Kdm6b
Alternative Name:	JMJD3 / KDM6B (Kdm6b Products)
Background:	The Jumonji domain-containing protein 3 (JMJD3) functions as a trimethylation-specific demethylase, converting the trimethylated histone H3 Lys27 residue to the dimethylated form,

Target Details

and is thought to also function as a transcriptional repressor. JMJD3 plays a central role in regulation of posterior development, by regulating HOX gene expression. It is involved in inflammatory response by participating in macrophage differentiation in case of inflammation by regulating gene expression and macrophage differentiation. JMJD3 can also interact with and demethylate p53, resulting in its stabilization and localization to the nucleus in mouse embryo fibroblasts during neural stem cell differentiation. Synonyms: Histone demethylase JMJD3, JmjC domain-containing protein 3, Jumonji domain-containing protein 3, KIAA0346, Lysine demethylase 6B

Gene ID: 23135

Pathways: [Warburg Effect](#)

Application Details

Application Notes: Optimal working dilution should be determined by the investigator.

Restrictions: For Research Use only

Handling

Concentration: 1.0 mg/mL

Buffer: PBS containing 0.02 % Sodium Azide as preservative

Preservative: Sodium azide

Precaution of Use: This product contains sodium azide: a POISONOUS AND HAZARDOUS SUBSTANCE which should be handled by trained staff only.

Handling Advice: Avoid repeated freezing and thawing.

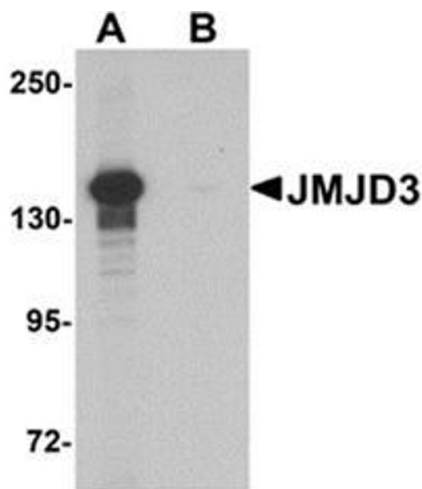
Storage: 4 °C/-20 °C

Storage Comment: Store undiluted at 2-8 °C for one month or (in aliquots) at -20 °C for longer.



Immunofluorescence

Image 1. Immunocytochemistry of JMJD3 in K562 cells with JMJD3 antibody at 2.5 ug/mL.



Western Blotting

Image 2. Western blot analysis of JMJD3 in K562 cell lysate with JMJD3 Antibody at 0.5 ug/mL in (A) the absence and (B) the presence of blocking peptide.