

Datasheet for ABIN1450112
anti-RUSC2 antibody (N-Term)

2 Images

[Go to Product page](#)

Overview

Quantity:	0.1 mg
Target:	RUSC2
Binding Specificity:	N-Term
Reactivity:	Human, Mouse
Host:	Rabbit
Clonality:	Polyclonal
Conjugate:	This RUSC2 antibody is un-conjugated
Application:	Western Blotting (WB), Immunohistochemistry (Paraffin-embedded Sections) (IHC (p)), Enzyme Immunoassay (EIA), Immunofluorescence (IF)

Product Details

Immunogen:	18 amino acid synthetic peptide from near the amino terminus of Human RUSC2
Isotype:	IgG
Purification:	Affinity chromatography purified via peptide column

Target Details

Target:	RUSC2
Alternative Name:	RUSC2 (RUSC2 Products)
Background:	RUSC2, also known as Iporin, shares with the related protein RUSC1 a common domain structure of RUN, leucine zipper and SH3 domain in addition to over 30 % amino acid identity. RUSC2 is a rab1-interacting protein that also interacts with GM130, another rab1-interacting

Target Details

protein. RUSC2 interacts with specific rab1 isoforms with different rab-binding specificity. It has been suggested that RUSC2 may function as a link between the targeting of ER derived vesicles triggered by the rab1 GTPase and a signaling pathway composed of proteins containing SH3 and/or poly-proline regions. Synonyms: Iporin, RUN and SH3 domain containing protein 2

Gene ID: 9853

NCBI Accession: [NP_001098673](#)

Application Details

Application Notes: Optimal working dilution should be determined by the investigator.

Restrictions: For Research Use only

Handling

Concentration: 1.0 mg/mL

Buffer: PBS containing 0.02 % Sodium Azide as preservative

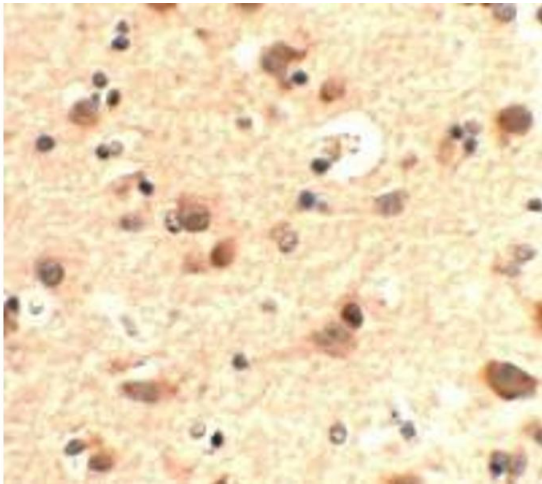
Preservative: Sodium azide

Precaution of Use: This product contains sodium azide: a POISONOUS AND HAZARDOUS SUBSTANCE which should be handled by trained staff only.

Handling Advice: Avoid repeated freezing and thawing.

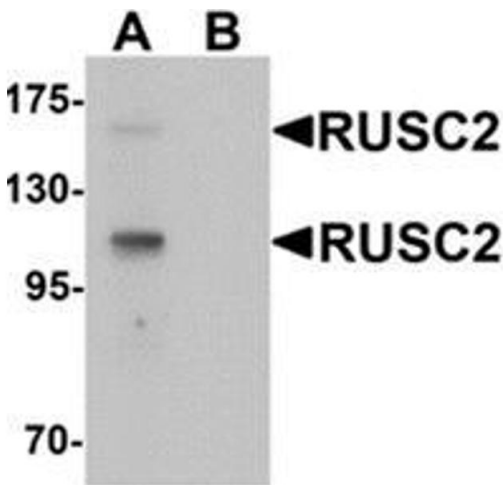
Storage: 4 °C/-20 °C

Storage Comment: Store undiluted at 2-8 °C for one month or (in aliquots) at -20 °C for longer.



Immunohistochemistry (Paraffin-embedded Sections)

Image 1. Immunohistochemistry of RUSC2 in human brain tissue with RUSC2 antibody at 5 ug/mL.



Western Blotting

Image 2. Western blot analysis of RUSC2 in SK-N-SH cell lysate with RUSC2 Antibody at 1 ug/mL in (A) the absence and (B) the presence of blocking peptide