



[Go to Product page](#)

Datasheet for ABIN1450122  
**anti-MLIP antibody (C-Term)**

2 Images

Overview

Quantity:	0.1 mg
Target:	MLIP
Binding Specificity:	C-Term
Reactivity:	Human
Host:	Rabbit
Clonality:	Polyclonal
Conjugate:	This MLIP antibody is un-conjugated
Application:	Western Blotting (WB), Immunohistochemistry (Paraffin-embedded Sections) (IHC (p)), Immunofluorescence (IF), Enzyme Immunoassay (EIA)

Product Details

Immunogen:	16 amino acid synthetic peptide near the carboxy terminus of Human MLIP
Isotype:	IgG
Cross-Reactivity (Details):	Species reactivity (tested):Human.
Purification:	Affinity chromatography purified via peptide column

Target Details

Target:	MLIP
Alternative Name:	MLIP ( <a href="#">MLIP Products</a> )
Background:	The muscle-enriched A-type lamin-interacting protein (MLIP) is ubiquitously expressed,

## Target Details

---

although most predominantly in heart, skeletal and smooth muscle, and interacts directly and co-localizes with lamin A and C in the nuclear envelope. MLIP also co-localizes with promyelocytic leukemia (PML) bodies within the nucleus. Decreasing lamin A/C expression with siRNA results in the upregulation and mislocalization of MLIP, suggesting that MLIP localization to the nuclear envelope is dependent on the lamin proteins. It has been suggested that MLIP may function as a tethering protein linking LMNA to factors within the nuclear envelope of within PML bodies. Synonyms: C6orf142, Muscle enriched A-type lamin interacting protein

Gene ID: 90523

NCBI Accession: [NP\\_612636](#)

## Application Details

---

Application Notes: Optimal working dilution should be determined by the investigator.

Restrictions: For Research Use only

## Handling

---

Concentration: 1.0 mg/mL

Buffer: PBS containing 0.02 % Sodium Azide as preservative

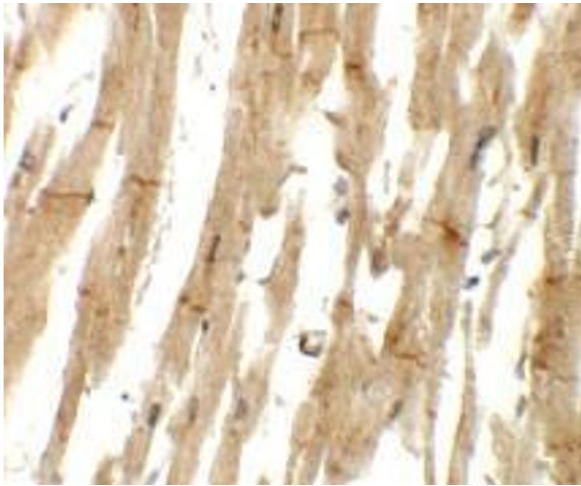
Preservative: Sodium azide

Precaution of Use: This product contains sodium azide: a POISONOUS AND HAZARDOUS SUBSTANCE which should be handled by trained staff only.

Handling Advice: Avoid repeated freezing and thawing.

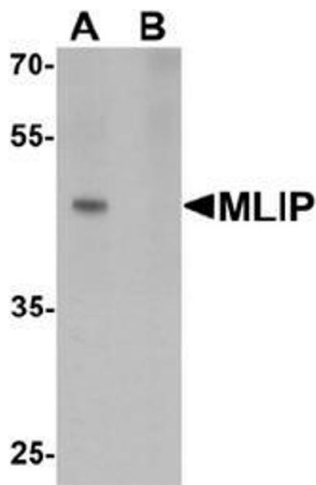
Storage: 4 °C/-20 °C

Storage Comment: Store undiluted at 2-8 °C for one month or (in aliquots) at -20 °C for longer.



### Immunohistochemistry (Paraffin-embedded Sections)

**Image 1.** Immunohistochemistry of MLIP in human heart tissue with MLIP antibody at 5 ug/mL.



### Western Blotting

**Image 2.** Western blot analysis of MLIP in 293 cell lysate with MLIP antibody at 1 ug/mL in (A) the absence and (B) the presence of blocking peptide.