

Datasheet for ABIN1450123  
**anti-C9ORF116 antibody (N-Term)**



[Go to Product page](#)

2 Images

## Overview

Quantity:	0.1 mg
Target:	C9ORF116
Binding Specificity:	N-Term
Reactivity:	Human, Mouse
Host:	Rabbit
Clonality:	Polyclonal
Conjugate:	This C9ORF116 antibody is un-conjugated
Application:	Western Blotting (WB), Enzyme Immunoassay (EIA), Immunofluorescence (IF)

## Product Details

Immunogen:	16 amino acid synthetic peptide near the amino terminus of Human PIERCE1
Isotype:	IgG
Purification:	Affinity chromatography purified via peptide column

## Target Details

Target:	C9ORF116
Alternative Name:	C9orf116 ( <a href="#">C9ORF116 Products</a> )
Background:	PIERCE1, also known as C9orf116, is an important p53 target gene contributing to normal DNA damage response and may play crucial roles in maintaining genomic integrity against genotoxic stresses, including UVC irradiation (1,2). PIERCE1 exists as two alternatively spliced isoforms and is predominantly expressed in human small cell lung cancer (3-4). PIERCE1

## Target Details

---

knockdown induces down-regulation of proapoptotic genes including Ei24, Apaf1 and PTEN, suggesting that PIERCE1 is a proapoptotic gene. It is helpful for in-depth understanding of p53 pathways and the design of new cancer therapies (1-3).Synonyms: Pierce1, p53-induced expression in RB-null cells protein 1

Gene ID: 138162

NCBI Accession: [NP\\_001041730](#)

## Application Details

---

Application Notes: Optimal working dilution should be determined by the investigator.

Restrictions: For Research Use only

## Handling

---

Concentration: 1.0 mg/mL

Buffer: PBS containing 0.02 % Sodium Azide as preservative

Preservative: Sodium azide

Precaution of Use: This product contains sodium azide: a POISONOUS AND HAZARDOUS SUBSTANCE which should be handled by trained staff only.

Handling Advice: Avoid repeated freezing and thawing.

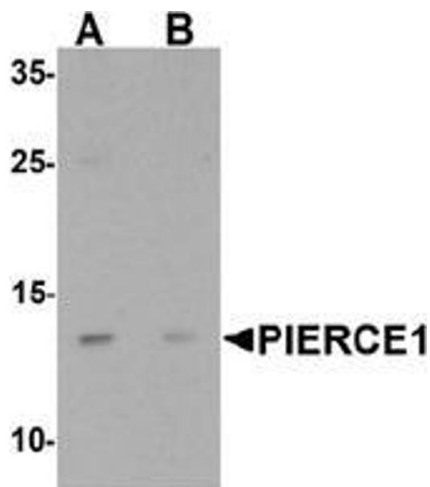
Storage: 4 °C/-20 °C

Storage Comment: Store undiluted at 2-8 °C for one month or (in aliquots) at -20 °C for longer.



#### Immunofluorescence

**Image 1.** Immunocytochemistry of PIERCE1 in A20 cells with PIERCE1 antibody at 2.5  $\mu\text{g/ml}$ .



#### Western Blotting

**Image 2.** Western blot analysis of PIERCE1 in A20 cell lysate with PIERCE1 Antibody at 1  $\mu\text{g/mL}$  in (A) the absence and (B) the presence of blocking peptide.