

Datasheet for ABIN1450124
anti-GRB10 antibody (C-Term)[Go to Product page](#)

2 Images

Overview

Quantity:	0.1 mg
Target:	GRB10
Binding Specificity:	C-Term
Reactivity:	Human, Mouse, Rat
Host:	Rabbit
Clonality:	Polyclonal
Conjugate:	This GRB10 antibody is un-conjugated
Application:	Western Blotting (WB), Immunofluorescence (IF), Enzyme Immunoassay (EIA)

Product Details

Immunogen:	17 amino acid synthetic peptide near the carboxy terminus of Human GRB10
Isotype:	IgG
Purification:	Affinity Chromatography purified via peptide column

Target Details

Target:	GRB10
Alternative Name:	GRB10 / GRBIR (GRB10 Products)
Background:	<p>GRB10 belongs to a small family of adapter proteins that are known to interact with a number of receptor tyrosine kinases and signaling molecules and function in diverse cellular processes.</p> <p>GRB10 is a growth factor receptor-binding protein that interacts with insulin receptors and insulin-like growth-factor receptors. Overexpression of some isoforms of GRB10 inhibits</p>

Target Details

tyrosine kinase activity and results in growth suppression. GRB10 can also interact with the L isoform of the proapoptotic protein Bim. This gene is imprinted in a highly isoform- and tissue-specific manner, with expression observed from the paternal allele in the brain, and from the maternal allele in the placental trophoblasts. Synonyms: Grb-IR, Growth factor receptor-bound protein 10, Insulin receptor-binding protein Grb-IR, KIAA0207

Gene ID: 2887

NCBI Accession: [NP_005302](#)

Pathways: [Regulation of Carbohydrate Metabolic Process](#), [Signaling Events mediated by VEGFR1 and VEGFR2](#)

Application Details

Application Notes: Optimal working dilution should be determined by the investigator.

Restrictions: For Research Use only

Handling

Concentration: 1.0 mg/mL

Buffer: PBS containing 0.02 % Sodium Azide as preservative

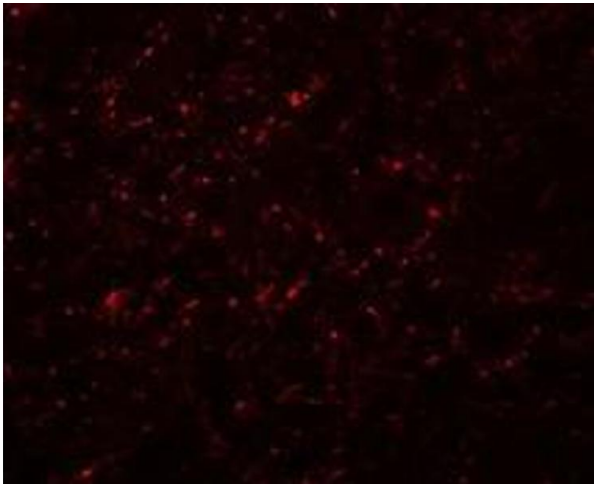
Preservative: Sodium azide

Precaution of Use: This product contains sodium azide: a POISONOUS AND HAZARDOUS SUBSTANCE which should be handled by trained staff only.

Handling Advice: Avoid repeated freezing and thawing.

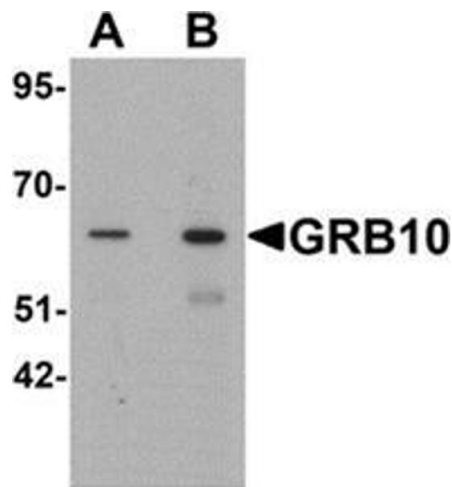
Storage: 4 °C/-20 °C

Storage Comment: Store undiluted at 2-8 °C for one month or (in aliquots) at -20 °C for longer.



Immunofluorescence

Image 1. Immunofluorescence of GRB10 in rat brain cells with GRB10 Antibody at 20 µg/ml.



Western Blotting

Image 2. Western blot analysis of GRB10 in SK-N-SH cell lysate with GRB10 Antibody at (A) 1 and (B) 2 µg/ml.