

Datasheet for ABIN1450127

anti-Nkx2-2 antibody (Middle Region)



[Go to Product page](#)

2 Images

Overview

Quantity:	0.1 mg
Target:	Nkx2-2
Binding Specificity:	Middle Region
Reactivity:	Human, Mouse, Rat
Host:	Rabbit
Clonality:	Polyclonal
Conjugate:	This Nkx2-2 antibody is un-conjugated
Application:	Immunofluorescence (IF), Western Blotting (WB), Immunohistochemistry (Paraffin-embedded Sections) (IHC (p)), Enzyme Immunoassay (EIA)

Product Details

Immunogen:	19 amino acid synthetic peptide near the center of Human NKX2-2
Isotype:	IgG
Cross-Reactivity (Details):	Species reactivity (tested): Human, Mouse, Rat.
Purification:	Affinity chromatography purified via peptide column

Target Details

Target:	Nkx2-2
Alternative Name:	NKX2-2 (Nkx2-2 Products)
Background:	NKX2-2 (NK2 homeobox 2) is a member of a family of transcription factors that are involved in

Target Details

embryonic development and cell fate. NKX2-2 is crucial in the development of pancreatic islet cell differentiation and activates the ghrelin-promoter in these cells. NKX2-2 is expressed at the onset of pancreatic epithelium formation and becomes restricted to mature alpha-, beta- and PP cells, and in NKX2-2-null mice embryos, all beta-cells and most a-cells are replaced by ghrelin-positive cells. NKX2-2 is also thought to be involved in ventral neuronal patterning and floor plate development and commissural axon guidance. Synonyms: Homeobox protein Nkx-2.2, NK2 transcription factor related, NKX2.2, NKX2B, locus 2

Gene ID: 4821

NCBI Accession: [NP_002500](#)

Pathways: [Dopaminergic Neurogenesis](#)

Application Details

Application Notes: Optimal working dilution should be determined by the investigator.

Restrictions: For Research Use only

Handling

Concentration: 1.0 mg/mL

Buffer: PBS containing 0.02 % Sodium Azide as preservative

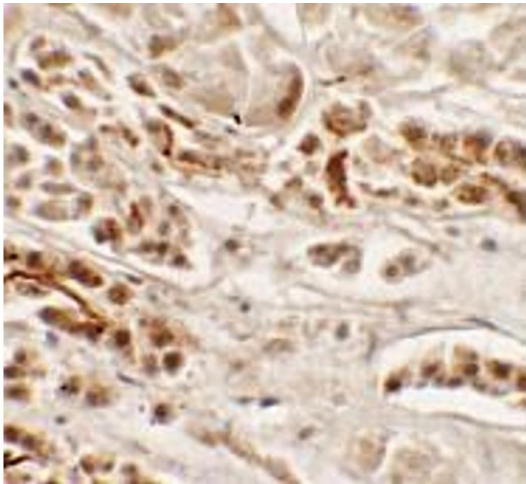
Preservative: Sodium azide

Precaution of Use: This product contains sodium azide: a POISONOUS AND HAZARDOUS SUBSTANCE which should be handled by trained staff only.

Handling Advice: Avoid repeated freezing and thawing.

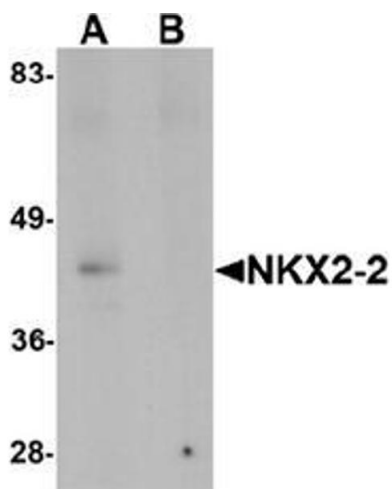
Storage: 4 °C/-20 °C

Storage Comment: Store undiluted at 2-8 °C for one month or (in aliquots) at -20 °C for longer.



Immunohistochemistry (Paraffin-embedded Sections)

Image 1. Immunohistochemistry of NKX2-2 in human kidney tissue with NKX2-2 antibody at 2.5 ug/mL.



Western Blotting

Image 2. Western blot analysis of NKX2-2 in rat kidney tissue lysate with NKX2-2 antibody at 1 ug/mL in (A) the absence and (B) the presence of blocking peptide.