

Datasheet for ABIN1450128 anti-NKX2-6 antibody (Middle Region)

[Go to Product page](#)

2 Images

Overview

Quantity:	0.1 mg
Target:	NKX2-6
Binding Specificity:	Middle Region
Reactivity:	Human, Mouse
Host:	Rabbit
Clonality:	Polyclonal
Conjugate:	This NKX2-6 antibody is un-conjugated
Application:	Western Blotting (WB), Immunofluorescence (IF), Immunohistochemistry (Paraffin-embedded Sections) (IHC (p)), Enzyme Immunoassay (EIA)

Product Details

Immunogen:	15 amino acid synthetic peptide near the center of Human NKX2-6
Isotype:	IgG
Cross-Reactivity (Details):	Species reactivity (tested): Human, Mouse.
Purification:	Affinity chromatography purified via peptide column

Target Details

Target:	NKX2-6
Alternative Name:	NKX2-6 (NKX2-6 Products)
Background:	NKX2-6 (NK2 homeobox 6) is a member of a family of transcription factors that are involved in

Target Details

embryonic development and cell fate. NKX2-6 is a vertebrate homolog of Drosophila homeobox-containing protein called 'tinman', which has been shown to be essential for development of the heart-like dorsal vessel. In conjunction with related gene, NKX2-5, this gene may play a role in both pharyngeal and cardiac embryonic development. Mutations in this gene are thought to be a cause for some congenital heart abnormalities. Synonyms: Homeobox protein Nkx-2.6, NKX2F, Nkx-2.6

Gene ID: 137814

Application Details

Application Notes: Optimal working dilution should be determined by the investigator.

Restrictions: For Research Use only

Handling

Concentration: 1.0 mg/mL

Buffer: PBS containing 0.02 % Sodium Azide as preservative

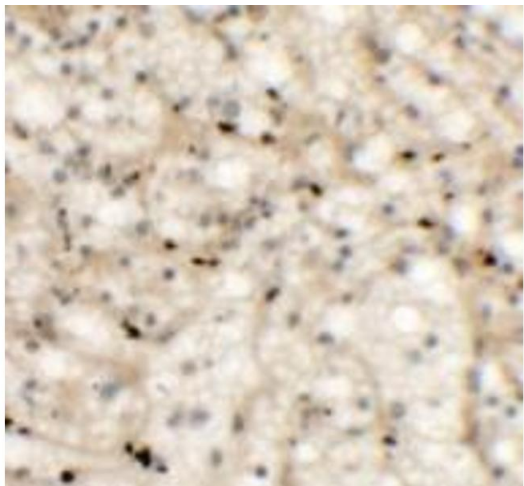
Preservative: Sodium azide

Precaution of Use: This product contains sodium azide: a POISONOUS AND HAZARDOUS SUBSTANCE which should be handled by trained staff only.

Handling Advice: Avoid repeated freezing and thawing.

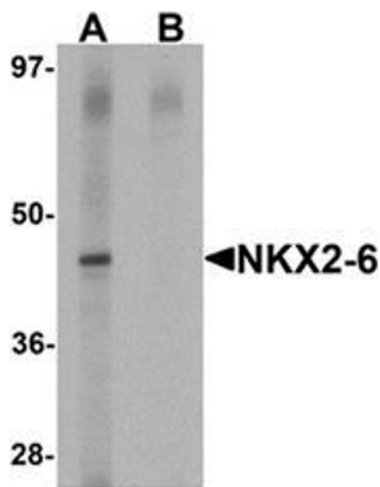
Storage: 4 °C/-20 °C

Storage Comment: Store undiluted at 2-8 °C for one month or (in aliquots) at -20 °C for longer.



Immunohistochemistry (Paraffin-embedded Sections)

Image 1. Immunohistochemistry of NKX2-6 in human spleen tissue with NKX2-6 antibody at 5 ug/mL.



Western Blotting

Image 2. Western blot analysis of NKX2-6 in mouse spleen tissue lysate with NKX2-6 antibody at 1 ug/mL in (A) the absence and (B) the presence of blocking peptide.