



[Go to Product page](#)

Datasheet for ABIN1450129

## anti-NKX2-8 antibody (Middle Region)

### 2 Images

#### Overview

Quantity:	0.1 mg
Target:	NKX2-8
Binding Specificity:	Middle Region
Reactivity:	Human, Rat, Mouse
Host:	Rabbit
Clonality:	Polyclonal
Conjugate:	This NKX2-8 antibody is un-conjugated
Application:	Western Blotting (WB), Immunofluorescence (IF), Immunohistochemistry (Paraffin-embedded Sections) (IHC (p)), Enzyme Immunoassay (EIA)

#### Product Details

Immunogen:	19 amino acid synthetic peptide near the center of Human NKX2-8
Isotype:	IgG
Purification:	Affinity chromatography purified via peptide column

#### Target Details

Target:	NKX2-8
Alternative Name:	NKX2-8 ( <a href="#">NKX2-8 Products</a> )
Background:	NKX2-8 (NK2 homeobox 8) is a member of a family of transcription factors that are involved in embryonic development and cell fate. It is expressed in the ventral foregut, the developing heart, the epithelial layers of the branchial arches and in the dorsal mesoderm. In conjunction with

## Target Details

---

related protein, NKX2-5, NKX2-8 may play a role in cardiac embryonic development. NKX2-8 is also thought to be involved in lung development and is suspected of being an oncogene in lung cancer that is activated by way of gene amplification at chromosome 14q13. Synonyms: Homeobox protein Nkx-2.8, NKX-2.8, NKX2-8, NKX2.8, NKX2G, NKX2H

---

Gene ID: 26257

---

NCBI Accession: [NP\\_055175](#)

## Application Details

---

Application Notes: Optimal working dilution should be determined by the investigator.

---

Restrictions: For Research Use only

## Handling

---

Concentration: 1.0 mg/mL

---

Buffer: PBS containing 0.02 % Sodium Azide as preservative

---

Preservative: Sodium azide

---

Precaution of Use: This product contains sodium azide: a POISONOUS AND HAZARDOUS SUBSTANCE which should be handled by trained staff only.

---

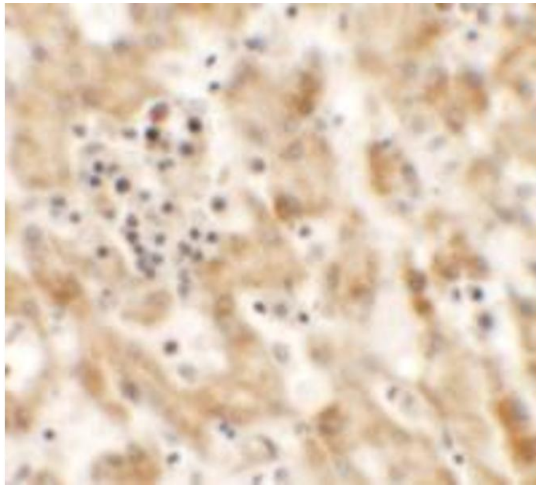
Handling Advice: Avoid repeated freezing and thawing.

---

Storage: 4 °C/-20 °C

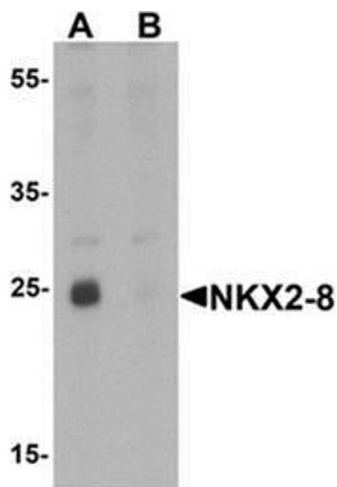
---

Storage Comment: Store undiluted at 2-8 °C for one month or (in aliquots) at -20 °C for longer.



#### Immunohistochemistry (Paraffin-embedded Sections)

**Image 1.** Immunohistochemistry of NKX2-8 in human liver tissue with NKX2-8 antibody at 2.5 µg/mL.



#### Western Blotting

**Image 2.** Western blot analysis of NKX2-8 in rat liver tissue lysate with NKX2-8 antibody at 1 µg/mL in (A) the absence and (B) the presence of blocking peptide