



[Go to Product page](#)

Datasheet for ABIN1450133

## anti-FOXRED2 antibody (N-Term)

### 2 Images

#### Overview

Quantity:	0.1 mg
Target:	FOXRED2
Binding Specificity:	N-Term
Reactivity:	Human
Host:	Rabbit
Clonality:	Polyclonal
Conjugate:	This FOXRED2 antibody is un-conjugated
Application:	Western Blotting (WB), Immunofluorescence (IF), Enzyme Immunoassay (EIA)

#### Product Details

Immunogen:	17 amino acid synthetic peptide near the amino terminus of Human FOXRED2
Isotype:	IgG
Cross-Reactivity (Details):	Species reactivity (tested):Human.
Purification:	Affinity chromatography purified via peptide column

#### Target Details

Target:	FOXRED2
Alternative Name:	FOXRED2 ( <a href="#">FOXRED2 Products</a> )
Background:	FOXRED2, also known as ERFAD, is an endoplasmic reticulum (ER) luminal flavoprotein which may function in ER associated degradation (ERAD). It has been proposed to bind non-native

## Target Details

---

proteins in the endoplasmic reticulum and target them to the ubiquitination machinery for subsequent degradation. Upon knockdown of FOXRED2, the degradation of the ERAD model substrate ribophorin 332 is delayed, and the overall level of polyubiquitinated cellular proteins is decreased. Defects in the related protein FOXRED1 are a cause of mitochondrial complex I deficiency (MT-C1D), suggesting the FOXRED2 may also play a role in MT-C1D. Synonyms: FAD-dependent oxidoreductase domain-containing protein 2

Gene ID: 80020

Pathways: [SARS-CoV-2 Protein Interactome](#)

## Application Details

---

Application Notes: Optimal working dilution should be determined by the investigator.

Restrictions: For Research Use only

## Handling

---

Concentration: 1.0 mg/mL

Buffer: PBS containing 0.02 % Sodium Azide as preservative

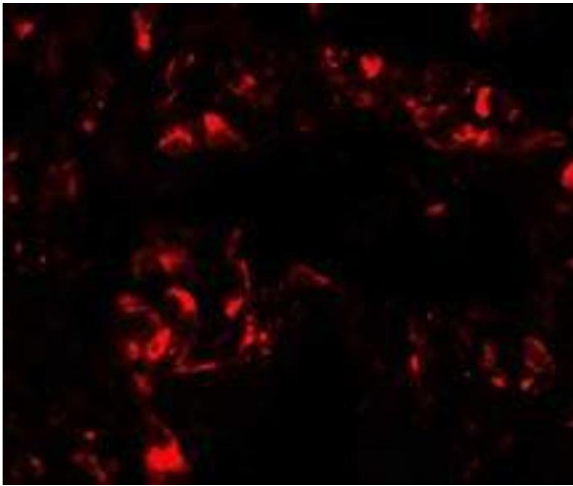
Preservative: Sodium azide

Precaution of Use: This product contains sodium azide: a POISONOUS AND HAZARDOUS SUBSTANCE which should be handled by trained staff only.

Handling Advice: Avoid repeated freezing and thawing.

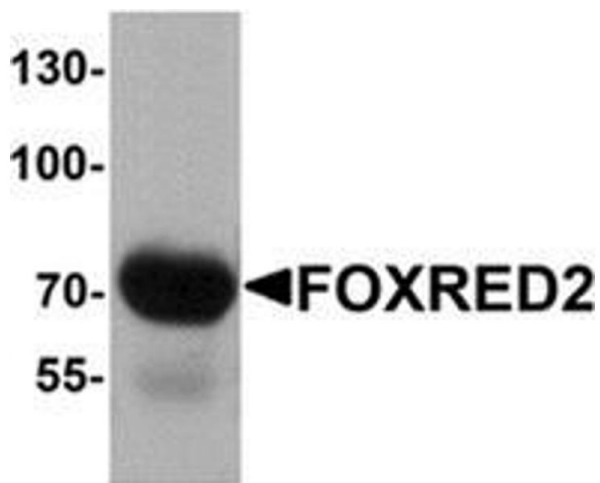
Storage: 4 °C/-20 °C

Storage Comment: Store undiluted at 2-8 °C for one month or (in aliquots) at -20 °C for longer.



### Immunofluorescence

**Image 1.** Immunofluorescence of FOXRED2 in human lung cells with FOXRED2 antibody at 20 ug/mL.



### Western Blotting

**Image 2.** Western blot analysis of FOXRED2 in human lung tissue lysate with FOXRED2 antibody at 1 µg/mL.